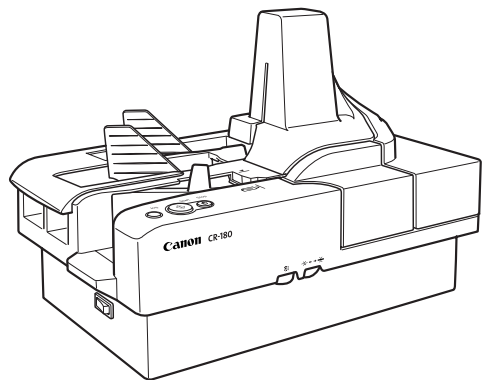


CANON DOCUMENT SCANNER

CR-180

INSTRUCTIONS



Please read this manual before operating this unit. After you finish reading this manual, store it in a safe place for future reference.

FCC REGULATIONS (For 120V models)

This equipment has been tested and found to comply with the limits for a Class B digital device, pursuant to Part 15 of the FCC Rules. These limits are designed to provide reasonable protection against harmful interference in a residential installation. This equipment generates, uses, and can radiate radio frequency energy and, if not installed and used in accordance with the instructions, may cause harmful interference to radio communications. However, there is no guarantee that interference will not occur in a particular installation. If this equipment does cause harmful interference to radio or television reception, which can be determined by turning the equipment off and on, the user is encouraged to try to correct the interference by one or more of the following measures:

- Reorient or relocate the receiving antenna.
- Increase the separation between the equipment and receiver.
- Connect the equipment into an outlet on a circuit different from that to which the receiver is connected.
- Consult the dealer or an experienced radio/TV technician for help.

Do not make any changes or modifications to the equipment unless otherwise specified in the manual. If such changes or modifications should be made, you could be required to stop operation of the equipment.

RADIO INTERFERENCE REGULATIONS (For 120V models)

This digital apparatus does not exceed the Class B limits for radio noise emissions from digital apparatus as set out in the Interference-causing equipment standard entitled "Digital Apparatus", ICES-003 of the Industry Canada.

RÈGLEMENT SUR LE BROUILLAGE RADIOÉLECTRIQUE (For 120V models)

Cet appareil numérique respecte les limites de bruits radioélectriques applicables aux appareils numériques de Classe B prescrites dans la norme sur le matériel brouilleur: "Appareils Numériques", NMB-003 édictée par l'Industrie Canada.

Für EMVG

Dieses Produkt ist zum Gebrauch im Wohnbereich, Geschäfts-und Gewerbebereich sowie in Kleinbetrieben vorgesehen.

MODEL NAMES

Model CR-180 is identical to model M11046.

Model CR-180 is the sales name of model M11046.

READ CAREFULLY BEFORE OPENING THE SEALED DISK PACKAGE

CANON SOFTWARE LICENSE AGREEMENT

IMPORTANT-READ THIS AGREEMENT BEFORE OPENING THE SEALED DISK PACKAGE! BY OPENING THE SEALED DISK PACKAGE, YOU ARE DEEMED TO AGREE TO BE BOUND BY THIS AGREEMENT.

This legal document is a license agreement between you and Canon Electronics Inc. ("Canon"). BY OPENING THE SEALED DISK PACKAGE, YOU ARE DEEMED TO AGREE TO BE BOUND BY THE TERMS OF THIS AGREEMENT. IF YOU DO NOT AGREE TO THE TERMS OF THIS AGREEMENT, DO NOT OPEN THE SEALED DISK PACKAGE AND PROMPTLY RETURN THE CANON SCANNER, THE DISK PACKAGE CONTAINING SCANNER DRIVER SOFTWARE PROGRAMS AND/OR SCANNER UTILITY SOFTWARE PROGRAM PROPRIETARY TO CANON OR ITS LICENSOR (THE "SOFTWARE") AND THE ACCOMPANYING DOCUMENTATION AND OTHER ITEMS TO THE PLACE WHERE YOU OBTAINED THEM FOR A REFUND BEFORE THEY ARE USED OR OPENED OR UNPACKED.

In consideration of the right to use the SOFTWARE, you agree to abide by the terms and conditions of this Agreement.

1. GRANT OF LICENSE: Canon grants you the personal, non-exclusive right to use the SOFTWARE only on a single computer. You may physically transfer the SOFTWARE from one computer to another provided that the SOFTWARE is used on only one computer at any time.

You shall not assign, sublicense, sell, rent, lease, loan, convey or transfer to any third party, or send or bring the SOFTWARE out of the country where you originally obtain it to other countries without required authorization of applicable governments, or copy, duplicate, translate or convert to another programming language the SOFTWARE or accompanying documentation, except as expressly provided herein.

Except as expressly permitted under the applicable law, you shall not alter, modify, disassemble, decompile or otherwise reverse engineer the SOFTWARE or accompanying documentation and you also shall not have any third party to do so.

2. BACK-UP COPY: You may make one copy of the SOFTWARE solely for a back-up purpose or copy the SOFTWARE onto the permanent storage device (e.g. a hard disk) of your computer and retain the original for a back-up purpose. Except as expressly permitted under the applicable law, any other copying of the SOFTWARE is a violation of this Agreement. You must reproduce and include the copyright notice on the back-up copy.

3. SUPPORT AND UPDATE: Canon, Canon's affiliate, their distributor or dealer is not responsible for maintaining or helping you to use the SOFTWARE. No updates, fixes or support will be made available for the SOFTWARE.

4. LIMITED WARRANTY AND DISCLAIMER OF INDEMNITY: Canon, Canon's affiliate, their distributor or dealer will not guarantee uninterrupted service, or absence or correction of errors. Therefore, the SOFTWARE is licensed on an "AS IS" basis without warranty of any kind. The diskette on which the SOFTWARE is recorded is warranted against defective material or workmanship under normal use for a period of ninety (90) days from the date you purchased the same as evidenced by a receipt or otherwise. The limited warranty does not apply if the failure of the diskette resulted from accident, abuse or misapplication of the SOFTWARE and shall not extend to anyone other than the original user of the SOFTWARE.

CANON, CANON'S AFFILIATE, THEIR DISTRIBUTOR OR DEALER DISCLAIMS ALL IMPLIED WARRANTIES, INCLUDING ANY WARRANTY OF MERCHANTABILITY OR FITNESS FOR A PARTICULAR PURPOSE, WITH RESPECT TO THE SOFTWARE OR ACCOMPANYING DOCUMENTATION.

NEITHER CANON, CANON'S AFFILIATE, THEIR DISTRIBUTOR NOR DEALER IS LIABLE FOR ANY LOSS OR DAMAGE INCLUDING CONSEQUENTIAL OR INCIDENTAL LOSS OR DAMAGE SUCH AS LOSS OF PROFITS, EXPENSE OR INCONVENIENCE, WHATSOEVER CAUSED BY OR ARISING OUT OF THE SOFTWARE, ACCOMPANYING DOCUMENTATION OR THE USE THEREOF.

CANON, CANON'S AFFILIATE, THEIR DISTRIBUTOR OR DEALER SHALL HAVE NO OBLIGATION TO INDEMNIFY YOU AGAINST ANY CLAIM OR SUIT BROUGHT BY A THIRD PARTY ALLEGING THAT THE SOFTWARE, ACCOMPANYING DOCUMENTATION OR THE USE THEREOF INFRINGES ANY INTELLECTUAL PROPERTY OF SUCH THIRD PARTY.

THE ABOVE IS CANON'S ENTIRE LIABILITY AND YOUR EXCLUSIVE REMEDY IN CONNECTION WITH THE SOFTWARE AND ACCOMPANYING DOCUMENTATION.

5. TERM: This Agreement is effective upon opening the sealed disk package and remains in effect until terminated. You may terminate this Agreement by destroying the SOFTWARE and any copy thereof. This Agreement will also terminate if you fail to comply with any of the terms of this Agreement. In addition to Canon enforcing its respective legal rights, you must then promptly destroy the SOFTWARE and any copy thereof.

6. U.S. GOVERNMENT RESTRICTED RIGHTS NOTICE: The SOFTWARE is provided with RESTRICTED RIGHTS. Use, duplication or disclosure is subject to restrictions as set forth in either subparagraph (c) (1) (ii) of the Rights in Technical Data and Computer Software clause at DFARS 252.227-7013 or subparagraph (c) (1) and (2) of the Commercial Computer Software Restricted Rights Clause at FAR 52.227-19, as applicable.

7. SEVERABILITY: In the event that provision of this Agreement is declared or found to be illegal by any court or tribunal of competent jurisdiction, such provision shall be null and void with respect to the jurisdiction of that court or tribunal and all the remaining provisions of this Agreement shall remain in full force and effect.

8. ACKNOWLEDGEMENT: BY OPENING THE SEALED DISK PACKAGE, YOU ACKNOWLEDGE THAT YOU HAVE READ THIS AGREEMENT, UNDERSTOOD IT, AND AGREE TO BE BOUND BY ITS TERMS AND CONDITIONS. YOU ALSO AGREE THAT THIS AGREEMENT IS THE COMPLETE AND EXCLUSIVE STATEMENT OF AGREEMENT BETWEEN YOU AND CANON CONCERNING THE SUBJECT MATTER HEREOF AND SUPERSEDES ALL PROPOSALS OR PRIOR AGREEMENTS, VERBAL OR WRITTEN, AND ANY OTHER COMMUNICATIONS BETWEEN YOU AND CANON RELATING TO THE SUBJECT MATTER HEREOF. NO AMENDMENT TO THIS AGREEMENT SHALL BE EFFECTIVE UNLESS SIGNED BY A DULY AUTHORIZED REPRESENTATIVE OF CANON.

Should you have any questions concerning this Agreement, or if you desire to contact Canon for any reason, please write to Canon's local affiliate.

International ENERGY STAR® Office Equipment Program



As an ENERGY STAR partner, Canon Electronics Inc. has determined that this product meets the ENERGY STAR guidelines for energy efficiency.

The International ENERGY STAR Office Equipment Program is an international program that promotes energy saving through the use of computers and other office equipment. The program backs the development and dissemination of products with functions that effectively reduce energy consumption. It is an open system in which business proprietors can participate voluntarily. The targeted products are office equipment such as computers, monitors, printers, fax machines, copiers and scanners. Their standards and logos are uniform among the participating nations.

NOTICE

- ① Copyright© 2003 by CANON ELECTRONICS INC. All rights reserved. No part of this publication may be reproduced, transmitted, transcribed, stored in a retrieval system, or translated into any language or computer language in any form or by any means, electronic, mechanical, magnetic, optical, chemical, manual, or otherwise, without the prior permission of CANON ELECTRONICS INC.
- ② The contents of this manual are subject to change without notice.
- ③ Every effort has been made to ensure the accuracy of information presented in this manual. However, Canon Electronics Inc. and the subsidiaries on the back cover assume no responsibility for any errors or their consequences.
- ④ We do not assume any responsibility for damage resulting from operations regardless of item ③.

Trademarks and Registered Trademarks

- ENERGY STAR is a United States registered mark.
- Microsoft Windows® and Microsoft Windows NT® are registered trademark of Microsoft Corporation in the United States and in other countries.
- Product names mentioned herein are for identification purposes only and may be trademarks and/or registered trademarks of their respective companies.

INTRODUCTION

Thank you for purchasing the Canon Check Reader CR-180. Please read this manual thoroughly before operating the machine in order to familiarize yourself with its capabilities, and to make the most of its many functions. After reading this manual, store it in a safe place for future reference.

Conventions

This manual uses the following symbols and indications. Before you start reading this manual, read and familiarize yourself with the meanings of the symbols shown below.



Warnings are provided for your safety and contain extremely important information. Failure to observe the instructions provided in a warning could result in death or serious injury to yourself or your co-workers.



Caution notices are also provided for your safety and contain important information. Failure to observe the instructions provided in a caution notice could result in serious injury to yourself or your co-workers or damage the equipment.



These important notes contain important information on procedures that must be followed or actions that must be avoided. Failure to observe a request, could result in damage to the equipment or a malfunction.



Notes provide additional tips or advice that can save you time and effort in using the check reader.

CONTENTS

INTRODUCTION	1
Conventions	1
Safety Precautions	5
Daily Maintenance	5
Installation Location	7
Power Supply	8
Carrying	8

Chapter 1 Introduction to the CR-180

1.1 Features of the CR-180	10
1.2 Packaging: What Is in the Box?	12
1.3 Part Names	13
◆ Front View	13
◆ Rear View	14
◆ Connectors	14

Chapter 2 Preparation Before Use

2.1 Checking Your Operating Environment	16
2.2 Connecting the Scanner to a Computer	17
SCSI Connections	17
◆ SCSI Cards	17
◆ Connecting the SCSI Cable	18
◆ Setting the SCSI ID	18
USB Connections	19
◆ USB 2.0 Interface Cards	19
◆ Connecting the USB Interface Cable	20
Connecting the Power Cord	20
2.3 Turning ON and OFF the Power	21
Turning ON the Power	21
Recognizing the Scanner	22
Turning OFF the Power	24
2.4 Preparing the Ink Cartridge	25
About the Ink Cartridge	25
Adjusting the Print Position	25

Chapter 3 Software

3.1 About the Software	28
3.2 Installing the Software	29
Installing the Scanning Utility	29
Installing the ISIS/TWAIN Driver	30
3.3 How to Use the Software	32
Starting and Closing the Scanning Utility	32
◆ Starting the Scanning Utility	32
◆ Closing the Scanning Utility	33
How to Use the ISIS/TWAIN Driver	33
3.4 Uninstalling the Software	34

Chapter 4 Document Feeding and Scanning

4.1 Documents	38
Types of Documents	38
Placing Documents	39
4.2 Document Feeding and Scanning	41
Scan Procedure	41
Manual Feeding (Bypass Mode)	43

Chapter 5 Troubleshooting

5.1 When the Scanner Is Not Recognized	46
SCSI Connections	46
USB Connections	47
5.2 Clearing Paper Jams	48
5.3 Feeding Trouble	50
5.4 When the Scanned Image Is Not Normal	52

Chapter 6 Maintenance

6.1 Daily Cleaning	54
Cleaning the Main Unit	54
Cleaning the Scanning Glass and Rollers	55
Cleaning the Magnetic Heads	58
Cleaning the Ink Heads and Ink Absorber	60
6.2 Maintenance	63
Replacing the Ink Cartridge	63
Adjusting the Separation Roller Gap	66

Specifications 67
 Scanner Specifications 67
 Exterior Dimensions 68

Index 69

Safety Precautions

Daily Maintenance

When you are working around the scanner, follow these precautions to avoid fire and electrical shock.



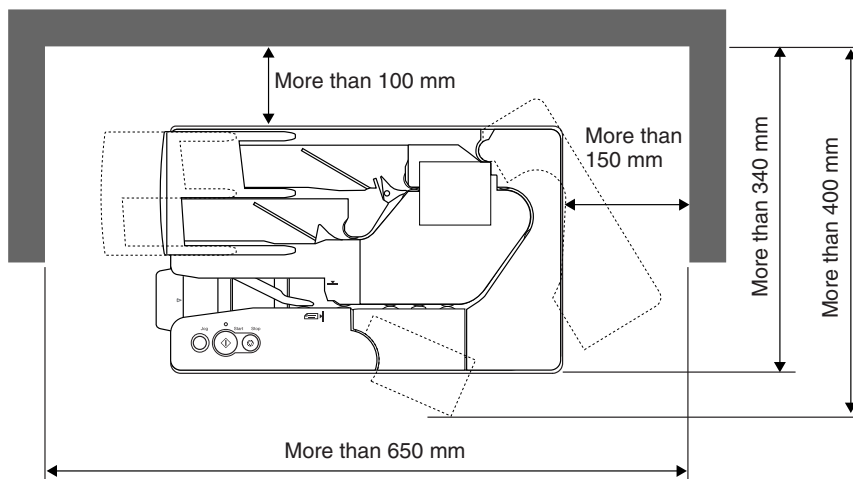
- Never install and operate the scanner near flammable substances, such as alcohol, paint thinner, benzene, or any other type of volatile solution.
- Never damage or modify the power cord, and never place heavy objects on the power cord.
- Always make sure that your hands are dry when you are handling the power cord or plug. Never grasp the plug when your hands are wet.
- Never plug the scanner into a multiplug power strip.
- Never bundle, wrap, or tie the power cord around itself or another object. Connect the plug securely into the power source.
- Use only the power cord and plug provided with the scanner.
- Never attempt to disassemble or modify the scanner.
- Never use flammable aerosol products near the scanner.
- Before you clean the scanner, turn the power OFF and disconnect the power cord from the power outlet.
- To clean the scanner's exterior, use a firmly wrung cloth, moistened slightly with water or mild detergent. Never use any type of volatile solution, such as alcohol, benzene or paint thinner.
- If you hear strange sounds, detect smoke or abnormal heat, sense vibration, or smell odd odors around the scanner, turn OFF the power switch immediately and disconnect the power cord from the power outlet. Call for service immediately.
- Handle the scanner with care. Avoid shocks and vibrations to the scanner caused by reckless handling. If you suspect the scanner has been accidentally damaged, turn OFF the power switch immediately and disconnect the power cord from the power outlet. Call for service immediately.
- Before you move the scanner, always turn OFF the power and disconnect the power cord from the power outlet.



CAUTION

- To avoid damage to the scanner, never place the scanner on an unstable or vibrating surface. The scanner may tip or fall over, causing injury.
- To avoid overheating and causing a fire, never block the air vents on the back of the scanner.
- Keep all liquids, beverages, or any type of liquid, and clips, staples, necklaces, or other metal objects away from the scanner. If you accidentally spill liquid or drop a metal object into the scanner, turn OFF the power immediately and disconnect the power cord from the power outlet. Call for service immediately.
- Never install the scanner in humid or dusty locations. Doing so may cause a fire or electrical shock.
- Never place heavy objects on top of the scanner. Such objects may tip or fall over, and cause injury.
- When you remove the power cord, grip it by the plug head. Never attempt to disconnect the power cord from the power outlet by pulling on the power cord. Doing so, may expose or break the core leads, damage the power cord, and cause a fire or electrical shock.
- Keep the area around the power outlet clear of all obstacles so you can disconnect the power cord easily at all times.
- Never spill water or volatile solutions (alcohol, benzene, paint thinner) into the scanner. Doing so, may cause a fire or electrical shock.
- When the scanner is not being used for a long time, disconnect the power cord from the power outlet.
- Avoid wearing loose fitting clothing, dangling jewelry, long ties, or even long hair that could become entangled with moving parts, especially the rollers that feed paper into the scanner. If such objects become entangled, immediately disconnect the power plug from the power outlet to stop the scanner.
- Be very careful when you are loading a document or clearing a paper jam. You may be injured unexpectedly. For example, the paper edges may cut your fingers.
- Do not open the maintenance cover while the scanner is operating. Doing so may result in a malfunction or injury.
- Do not directly touch the pins and contacts on the scanner connectors with your hands. Doing so may result in a malfunction.

Installation Location



ENGLISH

For operation, maintenance and ventilation, make sure that there is enough space around the scanner, as shown in the illustration above.

Avoid placing the scanner in the following places. It may cause a malfunction and adversely affect the scanner or your computer.

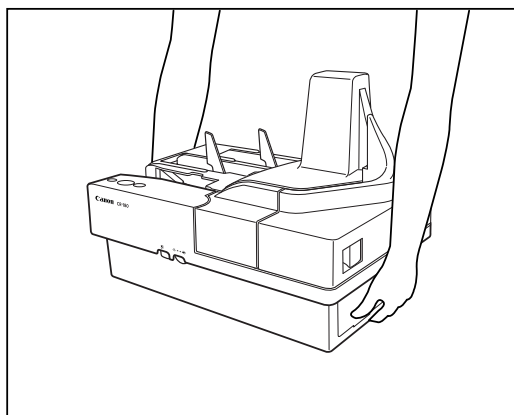
- Places exposed to direct sunlight
If installation in such places is unavoidable, provide a curtain or similar object to shade the scanner.
- Places subject to dust and fumes
Dust and cigarette fumes adversely affect the components inside the scanner.
- Near running water, a heat source, water vapor, or in an area, such as a laboratory exposed to ammonia gas, paint thinner, or other volatile chemicals.
- Places subject to vibration and strong shock
- Places subject to rapid changes in temperature or humidity
Condensation occurring inside the scanner may impair image quality. Place the scanner in a room that is well within the following range:
Room temperature: 50°F to 90.5°F (10°C to 32.5°C)
Relative humidity: 20% to 80% RH
Use the recommended operating environment for the ink cartridge when using the imprinter.
- Near electronic equipment or heavy equipment that generates a strong magnetic field, such as a speaker, TV, and radio

Power Supply

- Be sure to connect the scanner to an AC 220-240V (50/60 Hz) or AC 120V (60 Hz) power supply, according to your region's requirements.
- Make sure that the scanner is connected to an independent power outlet. Do not plug the scanner into an outlet shared with another device. If you use an extension cable, pay attention to the total amperage of the cable.
- If you are unsure of anything relating to the power supply, contact your dealer, service representative, or your local power company.
- Never place an object on top of the power cord or step on the power cord.
- Never bundle the power cord or wrap the cord around an object, such as a table leg.
- Do not tug on the power cord. When you remove the power cord, grip it by the plug head.
- Keep the area around the power outlet free of obstacles.

Carrying

When you move the CR-180, hold it firmly with both hands and carry it carefully. The scanner weighs approximately 13.9 lb (6.3 kg).



WARNING

When moving the scanner, be sure to turn OFF the power and remove any cables. If the cables are not removed before moving the scanner, you may damage the plugs or connectors by forcibly pulling them out.

Chapter 1

Introduction to the CR-180

This chapter describes the features of the scanner, what comes packaged in the box, and the names and functions of parts on the scanner.

1.1 Features of the CR-180	10
1.2 Packaging: What Is in the Box?	12
1.3 Part Names	13
Front View	13
Rear View	14
Connectors	14



Features of the CR-180

The Canon Check Reader CR-180 is a scanner with magnetic heads that can read checks and other documents that are printed with MICR (Magnetic Ink Character Recognition) compatible fonts and is capable of OCR (Optical Character Recognition). The CR-180 is compact and can handle large volumes of checks at a speed of 180 ppm.

Features

- **High speed scanning**

The CR-180 performs high-speed scans of check size documents at 180 ppm (200 dpi resolution).

- **Supports large documents**

Documents up to 118 mm x 230 mm can be scanned.

- **High durability**

The scanner has a high durability of 24 million scans.

- **Compact size**

271 mm (H) x 399 mm (W) x 242 mm (D)

- **Supports black-and-white (binary) and grayscale output**

- **Reads MICR characters**

A magnetic head is used to scan MICR characters that have been printed with magnetic ink or toner.

- **Supports OCR (Optical Character Recognition)**

Character images, such as E13B, OCR-A, OCR-B, and check writer are recognized as characters by the OCR function.

- **Easy to maintenance**

Large maintenance covers make handling paper jams and cleaning easy.

- **Jogger mechanism is standard**

A jogger mechanism, which uses vibration to align documents, comes standard equipped with the CR-180.

- **Bypass mode**

You can scan vouchers that contain two or more pages together as one document without paper jams.

- **Paper thickness adjustment mechanism**

Adjust the separation roller gap to the thickness of the paper being fed.

- **Automatic separator mechanism**

Scanned documents are automatically ejected to one of two pockets based on separation conditions.

- **Double feed detection**

The scanner detects double fed documents.

- **Drop out color**

This function enables drop out scanning of a specific color in the document.

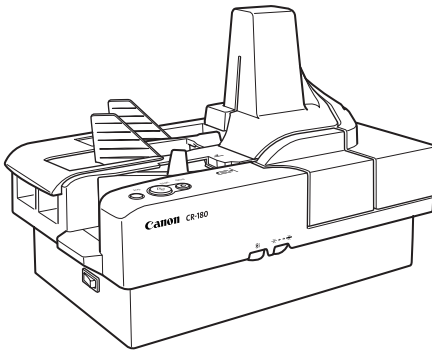
- **Imprinter is standard equipment**

An imprinter mechanism, to print text on documents as they are scanned, comes standard equipped with the scanner. The imprinter's ink cartridge is not included, and must be purchased separately. (See "About the Ink Cartridge," on p.25.)

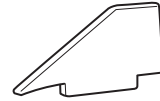
1.2

Packaging: What Is in the Box?

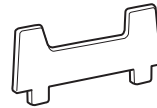
Make sure that you have everything. Check every item you have removed from the box. If any items are missing, contact your local authorized Canon dealer.



CR-180



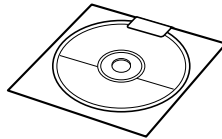
Document Feed Guide



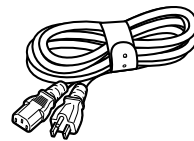
Jogger Support



Instructions (This Manual)



Setup Disc



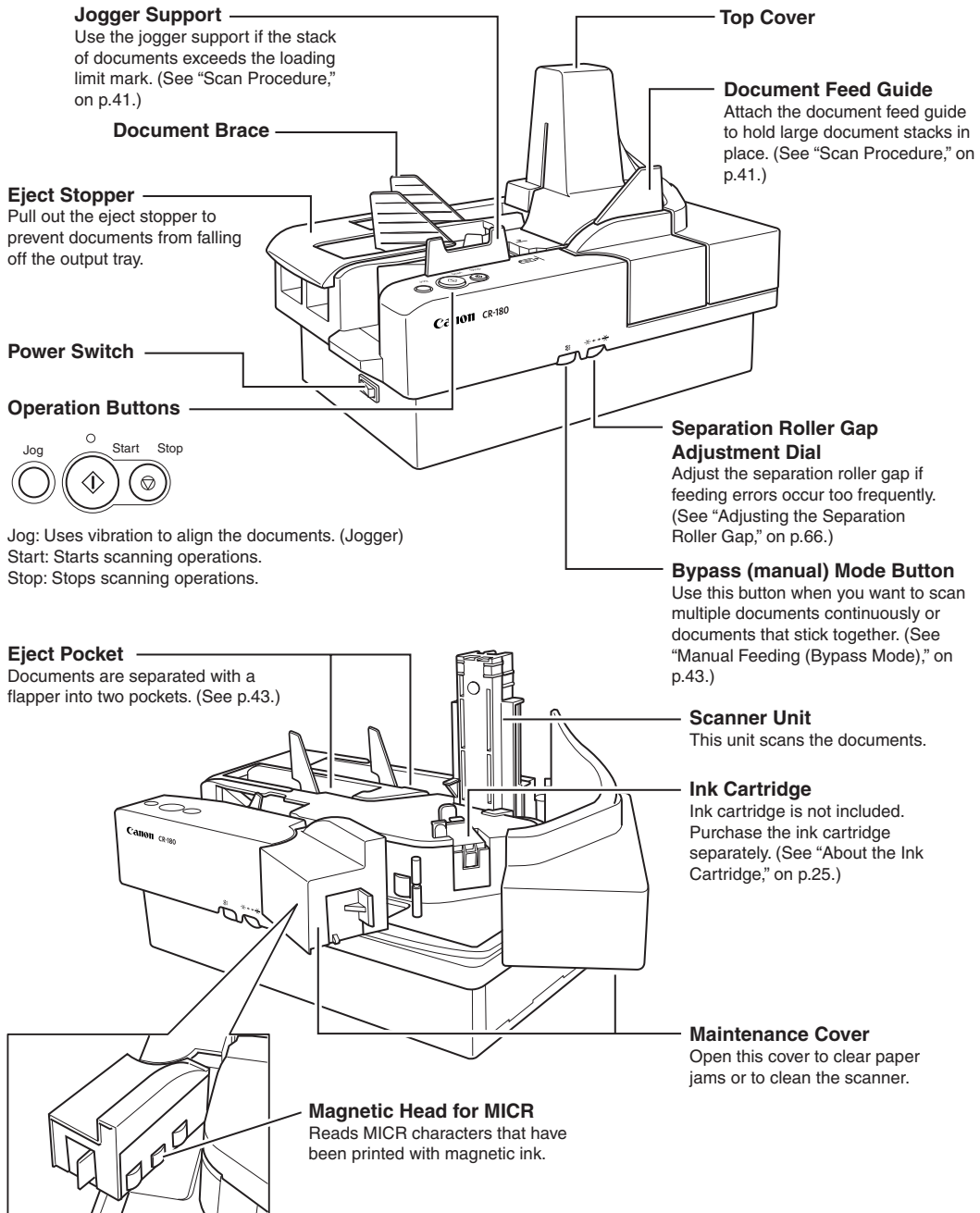
Power Cord^{*1}

*1 The power cord varies according to the country of purchase.

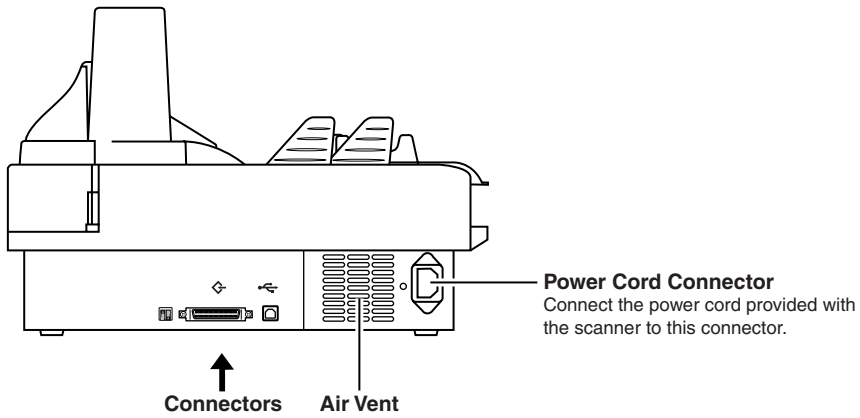
1.3 Part Names

This section describes the names and functions of each part. Before you connect the CR-180, take a few minutes to familiarize yourself with the main parts and their functions.

◆ Front View

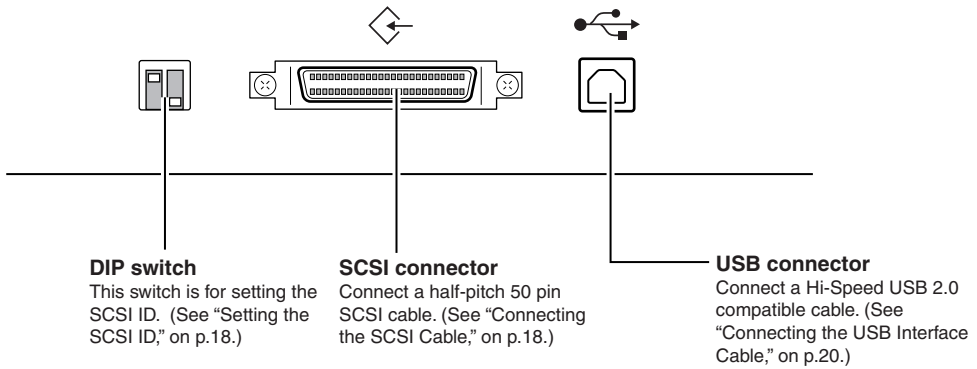


◆ Rear View



To avoid overheating and causing a fire, never block the air vents on the back of the scanner.

◆ Connectors



Chapter 2

Preparation Before Use

This chapter describes how to prepare the scanner to scan documents.

2.1 Checking Your Operating Environment	16
2.2 Connecting the Scanner to a Computer	17
SCSI Connections	17
USB Connections	19
Connecting the Power Cord	20
2.3 Turning ON and OFF the Power	21
Turning ON the Power	21
Recognizing the Scanner	22
Turning OFF the Power	24
2.4 Preparing the Ink Cartridge	25
About the Ink Cartridge	25
Adjusting the Print Position	25

2.1

Checking Your Operating Environment

Your computer system must meet the following conditions to use the CR-180.

- **IBM PC/AT or compatible machines that meet the following specifications:**
 - Intel Celeron 733 MHz or faster
 - 256 MB main memory or more (recommended)
 - 100 MB or more free space on the hard disk
- **SCSI card that is compatible with this scanner or Hi-Speed USB 2.0 interface card (See “USB 2.0 Interface Cards,” on p.19.)**
- **Monitor that can display a resolution of 1024 x 768 (XGA) or greater is recommended.**
- **One of the following operating systems:**
 - For SCSI**
 - Microsoft Windows 95 OSR2
 - Microsoft Windows 98SE
 - Microsoft Windows Me
 - Microsoft Windows NT 4.0 Workstation SP6
 - Microsoft Windows 2000 Professional SP4
 - Microsoft Windows XP SP1
 - For USB**
 - Microsoft Windows 98SE
 - Microsoft Windows Me
 - Microsoft Windows 2000 Professional SP4
 - Microsoft Windows XP SP1
- **Either an ISIS (compatible) or a TWAIN (compatible) application that operates on one of the operating systems noted above.**



- Use the latest USB 2.0 driver when using USB connections. Contact your local retailer for details.
- If the CPU, memory, SCSI card, or USB interface card does not meet the recommended specifications, the scanning speed may slow down, or the time required to transfer data may increase.

2.2

Connecting the Scanner to a Computer

There are two ways to connect the scanner to your computer; SCSI or USB. Use the method that is compatible with your computer system.



CAUTION

- Do not turn OFF the scanner or remove any interface cables when an application is running.
- Do not connect both SCSI and USB interface cables at the same time.
- Turn OFF the computer and the scanner before changing the cable.

ENGLISH

SCSI Connections

Connect the scanner to the computer.



Note

To connect the SCSI cable to the scanner, you will need the following items that are not included in the package:

- SCSI card
 - Check that the SCSI card is installed on your computer.
 - Use one of the recommended SCSI cards. (See “SCSI Cards” below.)
- SCSI cable
 - The scanner’s SCSI connector is a half-pitch 50-pin connector. Check the shape of the connector on your computer’s SCSI card or on the SCSI device connected to your computer, and prepare a SCSI cable that is compatible with your operating environment.

◆ SCSI Cards

Be sure to use one of the recommended SCSI cards when connecting the SCSI cable to the scanner. The recommended SCSI cards are listed below.

Recommended SCSI cards

Manufacturer: Adaptec

Product names: AHA-2930U, AHA-2940AU, AHA-2930LP, ASC-19160, ASC-29160, APA-1480

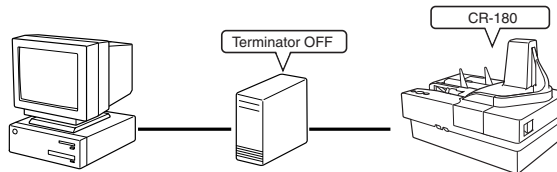


Important

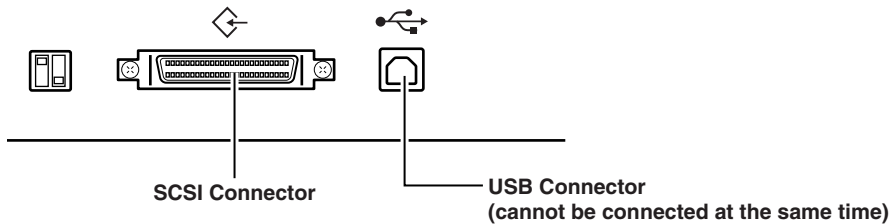
- Be sure to follow the installation procedure in your computer’s operation manual when installing the SCSI card to your computer.
- Scan speed is slightly reduced with the AHA-2930LP because synchronous transfer is not available with Windows 2000/XP.

◆ Connecting the SCSI Cable

Connect your computer to the scanner using the SCSI cable. When only the scanner is connected to your computer, or when another SCSI device is connected on a daisy chain, make sure that the scanner is the last SCSI device at the end of the daisy chain. Also, turn all terminator SCSI devices that are connected on the daisy chain between the computer and CR-180 to OFF.



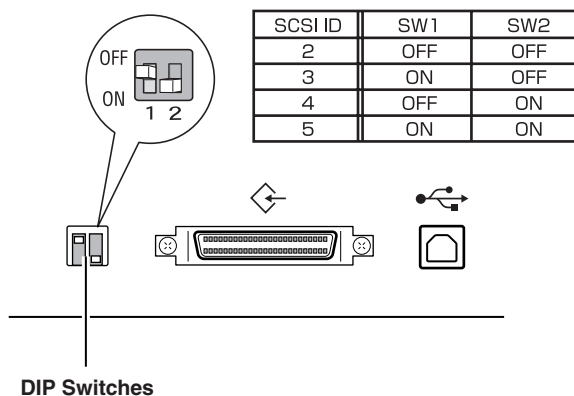
- Before you connect the SCSI cable, make sure that the scanner and the computer are turned OFF.
- Do not connect both SCSI and USB interface cables at the same time.



◆ Setting the SCSI ID

Set the SCSI ID using the DIP (Dual Inline Package) switch located on the left side of the SCSI connector.

Push the DIP switches down to turn them ON, and push them up to turn them OFF. Refer to the following table to set the SCSI ID using the DIP switches.



The SCSI ID default is set to 2. Be careful not to set the same SCSI ID as other SCSI devices that are mounted internally or connected to the computer.

USB Connections

Connect the scanner to the computer.



Important

To connect the scanner with a USB interface cable, you will need the following items that are not included in the package.

- USB interface cable
Use an interface cable that supports a Hi-Speed USB 2.0 connection.
- USB interface card
Use an extended USB interface card that is compatible with a Hi-Speed USB 2.0 connection, and has been operationally tested by Canon.

ENGLISH

◆ USB 2.0 Interface Cards

Be sure to use one of the recommended USB 2.0 interface cards when connecting the scanner with a USB interface cable. The recommended USB 2.0 interface cards are listed below.

Recommended USB 2.0 interface cards

Manufacturer: Adaptec
 Product: USB 2 Connect 2000LP (AUA-2000)
 USB 2 Connect 3100 (AUA-3100LP)
 USB 2 Connect 5100 (AUA-5100)
 USB 2 Connect for Notebooks (AUA-1420)



Important

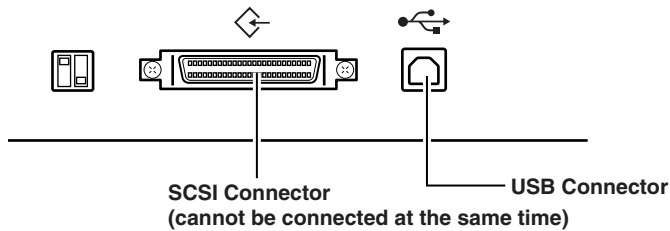
- Be sure to follow the installation procedure in your computer's operation manual when installing the USB 2.0 interface card in your computer.
- Use the most recent USB 2.0 driver provided by Adaptec or Microsoft.
- Windows 95/NT operating systems do not support USB. Use a SCSI cable to connect the scanner to computers using Windows 95/NT operating systems.
- If you need to use a USB hub, use one that supports USB 2.0.
- This scanner has passed the Hi-Speed USB 2.0 verification test. However, it may not function properly even when Hi-Speed USB 2.0 is built-in to a computer as standard.
- Scan speed may slow down when Hi-Speed USB 2.0 is not supported.

◆ Connecting the USB Interface Cable



CAUTION

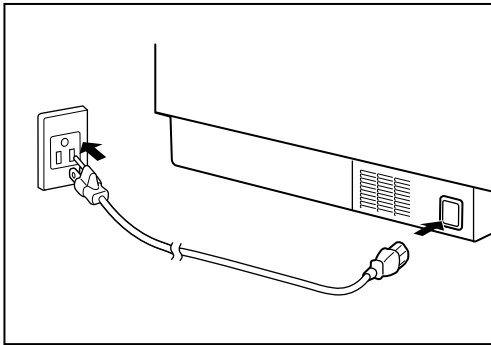
Do not connect both a SCSI cable and USB interface cable at the same time.



Connecting the Power Cord

Connect the power cord.

Be sure to use only the power cord provided with the scanner.



WARNING

When connecting the power cord, follow these precautions. Failure to do so may cause a fire or electrical shock.

- Never grasp the plug when your hands are wet.
- Never plug the scanner into a multiplug power strip.
- Never bundle or tie the power cord around itself or another object. Connect the plug securely into the power source.
- Use only the power cord and plug provided with the scanner.
- Before you connect the power cord, be sure to turn OFF the power switch.
- Be sure to connect the scanner to an AC 220-240V (50/60 Hz) or AC 120V (60 Hz) power supply, according to your region's requirements.
- Do not plug the scanner into an outlet shared with another device. If you use an extension cable, pay attention to the total amperage of the cable.

2.3 Turning ON and OFF the Power

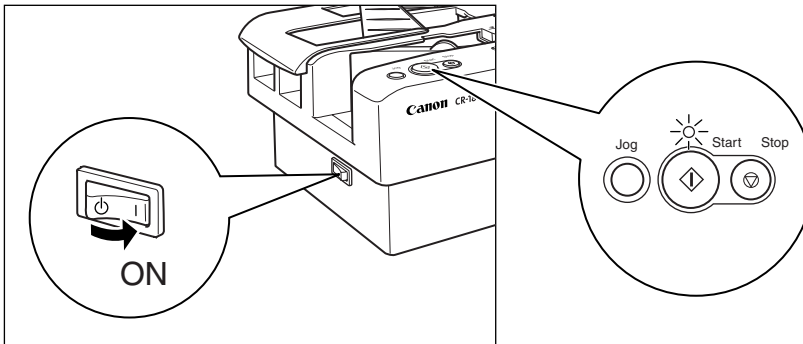
Follow the procedures below to turn the scanner power ON and OFF.

Turning ON the Power



Be sure to turn the power of all connected SCSI devices ON before you turn the computer ON.

1 To turn ON the scanner, press the power switch.



The LED above the Start button, flashes after you turn the power ON for a few seconds, then it remains lit. If the scanner does not work, or the LED continues to flash, there is a problem with the scanner. Turn OFF the power, and contact your local retailer or a Canon service department.



If you hear strange sounds, detect smoke or abnormal heat, sense a vibration, or smell odd odors around the scanner, turn OFF the power immediately and disconnect the power cord from the power outlet. Call for service immediately. Failure to do so, may cause a fire.

2 Turn ON your computer.



When you connect the scanner to your computer, Windows needs to recognize the scanner upon start up. (See "Recognizing the Scanner," on p.22.)

Recognizing the Scanner

If you are using Windows 95/98/Me or Windows 2000/XP, the first time that you turn ON your computer after connecting the scanner, Windows Plug and Play automatically displays a screen prompting you to install the scanner driver. Follow the instructions on the screen to proceed with the installation. (The name of the installation dialog box varies depending on which Windows operating system you are using.)

- **If you are using Windows 95, the “Update Device Driver Wizard” dialog box appears.**
 1. Click [Next].
 2. Click [Other locations].
 3. Insert the setup disc into the computer’s CD-ROM drive.
 4. Type “D:\INF\Win95” (assuming that “D” is assigned to your CD-ROM drive), and then click [OK].
 5. Click [Finish].

- **If you are using Windows 98SE, the “Add New Hardware Wizard” dialog box appears.**
 1. Click [Next].
 2. Select [Search for the best driver for your device. (Recommended)], and then click [Next].
 3. Insert the setup disc into the computer’s CD-ROM drive.
 4. Select [Specify a location], type “D:\INF” (assuming that “D” is assigned to your CD-ROM drive), and then click [Next].
 5. Click [Next].
 6. Click [Finish].

- **If you are using Windows Me, the “Add New Hardware Wizard” dialog box appears.**
 1. Select [Specify the location of the driver (Advanced)], and then click [Next].
 2. Insert the setup disc into the computer’s CD-ROM drive.
 3. Select [Search for the best driver for your device. (Recommended)], and then select [Specify a location]. Type “D:\INF” (assuming that “D” is assigned to your CD-ROM drive), and then click [Next].
 4. Click [Next].
 5. Click [Finish].

● **If you are using Windows 2000 Professional, the “Found New Hardware Wizard” dialog box appears.**

1. Click [Next] to proceed to the “Install Hardware Device Drivers” screen.
2. Select [Search for a suitable driver for my device (recommended)], and then click [Next] to proceed to the “Locate Driver Files” screen.
3. Select [Specify a location], and then click [Next].
4. Insert the setup disc into the computer’s CD-ROM drive.
5. Type “D:\INF” (assuming that “D” is assigned to your CD-ROM drive), and then click [OK].
6. On the “Driver Files Search Results” screen, click [Next].
7. If the message “Digital Signature Not Found” appears, click [Yes] to continue with the installation.
8. On the “Completing the Found New Hardware Wizard” screen, click [Finish].

● **If you are using Windows XP, the “Found New Hardware Wizard” dialog box appears.**

1. Insert the setup disc into the computer’s CD-ROM drive.
2. On the “Welcome to the Found New Hardware Wizard” screen, select [Install from a list or specific location (Advanced)], and then click [Next].
3. Select [Search for the best driver in these locations], and then select [Search removable media (floppy, CD-ROM...)] to clear the check mark. Select [Include this location in the search]. Type “D:\INF” (assuming that “D” is assigned to your CD-ROM drive), and then click [Next].
4. Click [Continue Anyway] in the “Hardware Installation” dialog box. Although a message appears indicating that the driver “has not passed Windows logo testing”, simply continue the installation.
5. Click [Finish] on the “Completing the Found New Hardware Wizard” screen.



Note

- The CR-180 will be registered as “CANON CR-180 SCSI” or “CANON CR-180 USB” in the Imaging Device directory.
- The displayed device name of the CR-180 differs depending on the connection, via SCSI or USB. Turn OFF the power to the scanner and the computer before changing the connections, and then turn ON the power, and let the computer recognize the scanner again.



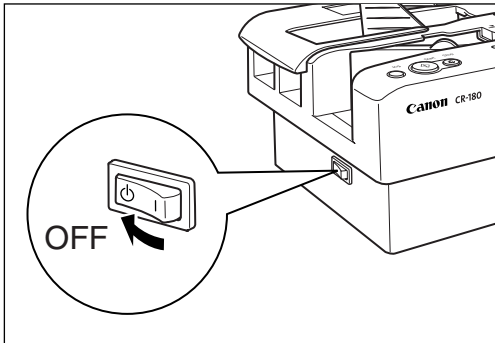
Important

If you cancel the scanner recognition operation before it finishes, the driver installation screen will be displayed when you restart your computer. Complete the driver installation.

Turning OFF the Power

1 Turn OFF your computer.

2 To turn OFF the scanner, press the power switch.



Turn OFF the power to the computer if you are using a SCSI cable to connect the scanner.



- Wait at least 10 seconds before turning the scanner back ON.
- For your safety, disconnect the power plug from the power outlet if you are not using the scanner for a long period of time.

2.4 Preparing the Ink Cartridge

This section describes how to prepare the ink cartridge so that you can use the imprinter to print text on scanned documents.

About the Ink Cartridge

The ink cartridge is not included with the scanner. Purchase an ink cartridge separately, as shown below.

Compatible ink cartridges: Hewlett Packard ink cartridge, model numbers C6602B (blue), C6602G (green), C6602R (red)



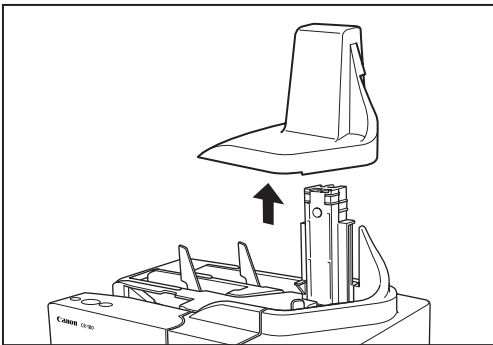
Note

For details on installing the ink cartridge, see “Replacing the Ink Cartridge,” on p.63.

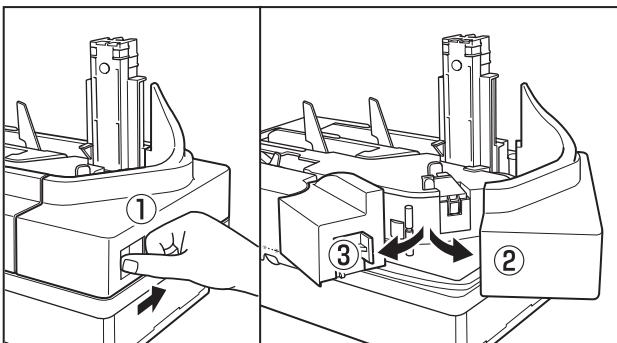
Adjusting the Print Position

You can adjust the print position to three different levels.

1 Remove the top cover.



2 Press the open button, and pull the maintenance cover open to the right and left.

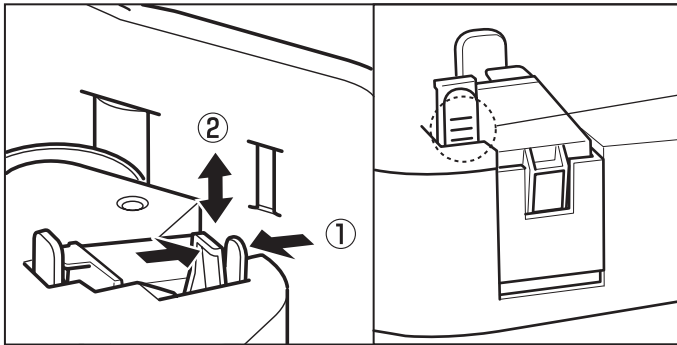


3 Squeeze the print position adjustment lever and lift up to adjust the print position.



Note

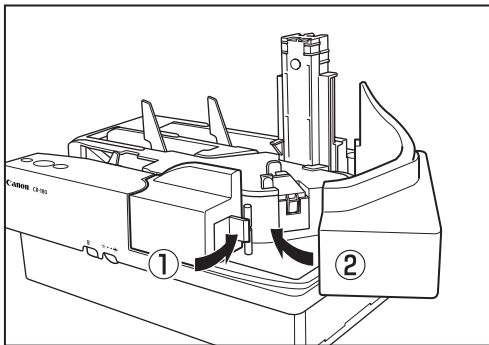
- Adjust the position of the text so that it aligns with the adjustment line on the print position adjustment lever.
- The value of the adjustment line indicates the distance from the bottom edge of the document to the center of the text.



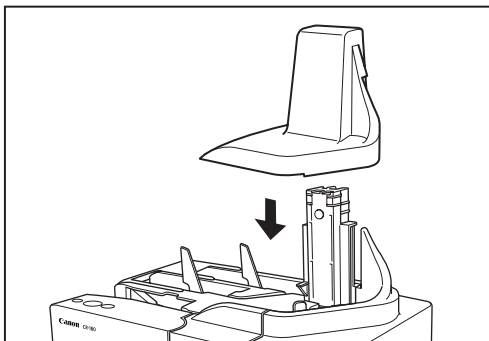
Adjustment Line

- Top: 40 mm from the bottom edge of the document
- Middle: 36 mm from the bottom edge of the document
- Bottom: 32 mm from the bottom edge of the document

4 Close the maintenance cover in the order shown in the diagram below.



5 Carefully replace the top cover.



Note

- If the top cover is not firmly in place, the ink cartridge is not installed properly. Check the ink cartridge.

Chapter 3

Software

This chapter describes how to install and use the scanning software, Scanning Utility, and ISIS/TWAIN driver.

3.1 About the Software	28
3.2 Installing the Software	29
Installing the Scanning Utility	29
Installing the ISIS/TWAIN Driver	30
3.3 How to Use the Software	32
Starting and Closing the Scanning Utility	32
How to Use the ISIS/TWAIN Driver	33
3.4 Uninstalling the Software	34

3.1

About the Software

The following software applications are provided on the setup disc that is packaged with the scanner. Be sure to open and read the Readme.txt file on the setup disc before installing the software.

- **Scanning Utility for the CR-180**

This utility software is a dedicated software application for the CR-180. A dedicated scanner driver is installed after you install the utility software.

- **ISIS/TWAIN driver**

This scanner driver should be used with ISIS (Image and Scanner Interface Specification) compatible or TWAIN (Technology Without Any Interested Name) compatible software. Install it, only if it is required.



- The ISIS/TWAIN driver provided with the scanner does not necessarily operate all ISIS compatible or TWAIN compatible applications. Contact your software dealer or service representative for further information.
- Some functions mentioned in this manual may not be operated in some applications.

3.2 Installing the Software

This section describes how to install the Scanning Utility and ISIS/TWAIN driver so that you can use the scanner.

Installing the Scanning Utility

Follow the instructions below to install the Scanning Utility and the dedicated driver.



Note

The dedicated scanner driver is installed after the Scanning Utility has been installed.

1 Turn ON your computer, and log on to Windows.



Important

Be sure to log on as the Administrator if your system is Windows NT 4.0 Workstation, Windows 2000 Professional, or Windows XP.

2 Insert the setup disc into the CD-ROM drive.

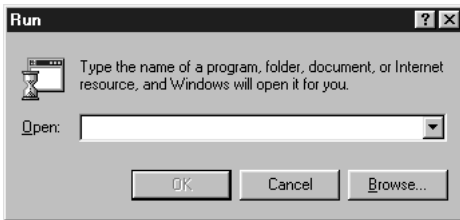
This manual assumes that “D” is assigned to your CD-ROM drive.

3 Click [Start], and then select [Run].

The screen that appears depends on which Windows operating system you are using.



4 Enter “D:\SU180\setup.exe” in the [Open] fields, and then click [OK].



Installation starts.

5 Follow the instructions on the screen to complete the installation.

Installing the ISIS/TWAIN Driver

Connect the scanner to your computer.



- If another ISIS compatible driver is already installed on the computer, be sure to make a backup of the following file. The content of this file may be overwritten when the ISIS/TWAIN driver is installed.
C:\Windows\PixTran*.*
C:\Windows\System\pix*.dll
- The names of the “\Windows” and “\Windows\System” folders are different, depending on which Windows operating system you are using. The names of the above folders are representative and should be replaced by the name of the folder used in your operating system.

1 Turn ON your computer, and start Windows.



Be sure to log on as the administrator if your system is Windows NT 4.0 Workstation, Windows 2000 Professional, or Windows XP.

2 Insert the setup disc into the CD-ROM drive.

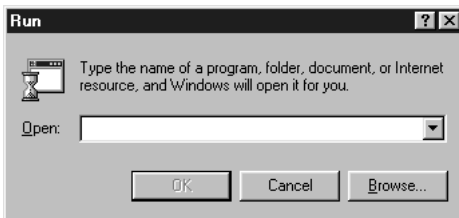
This manual assumes that “D” is assigned to your CD-ROM drive.

3 Click [Start], and then select [Run].

The screen that appears depends on which Windows operating system you are using.



4 Enter “D:\Driver\setup.exe” in the [Open] field, and then click [OK].



Installation starts.

5 Follow the instructions on the screen to complete the installation.

3.3

How to Use the Software

This section describes how to start up the Scanning Utility so that you can use the scanner. Read the Help files for both the Scanning Utility and the ISIS/TWAIN Driver for information on how to use them.

Starting and Closing the Scanning Utility

This section describes the procedure for using the Scanning Utility. Read the [Help] file in [Scanning Utility] for more information.

◆ Starting the Scanning Utility

1 Click [Start], point to [Programs], then click [Scanning Utility for CR-180].

Click [All Programs], then [Scanning Utility for CR-180] if your Operating System is Windows XP.



2 Start the Scanning Utility.

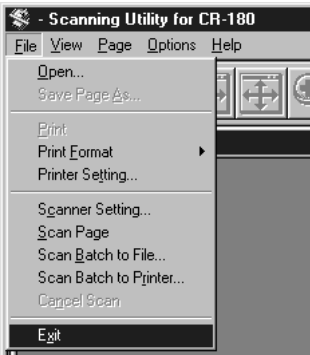


Note

The basic operation of the Scanning Utility is noted in the Scanning Utility help file. On the [Help] menu, click [Help] to view the explanation.

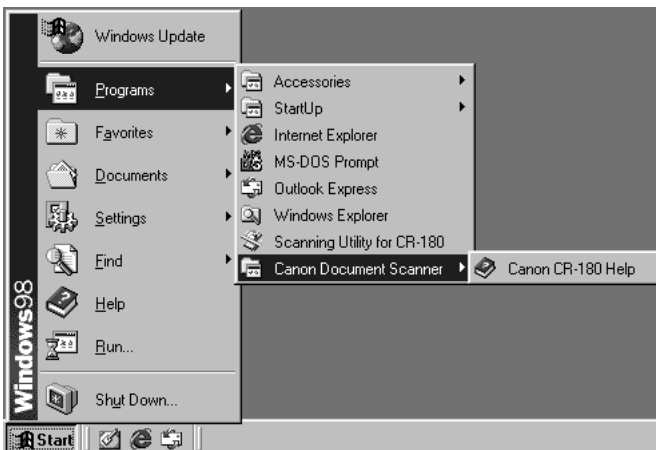
◆ Closing the Scanning Utility

1 On the [File] menu, select [Exit].



How to Use the ISIS/TWAIN Driver

The explanation on how to use the ISIS/TWAIN driver is in the ISIS/TWAIN driver help file. To view the help file, click [Start] point to [Programs], click [Canon Document Scanner], and then click [Canon CR-180 Help].



3.4 Uninstalling the Software

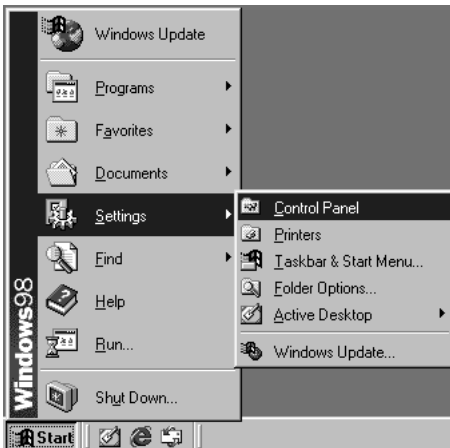
This section describes how to uninstall the Scanning Utility and ISIS/TWAIN driver.



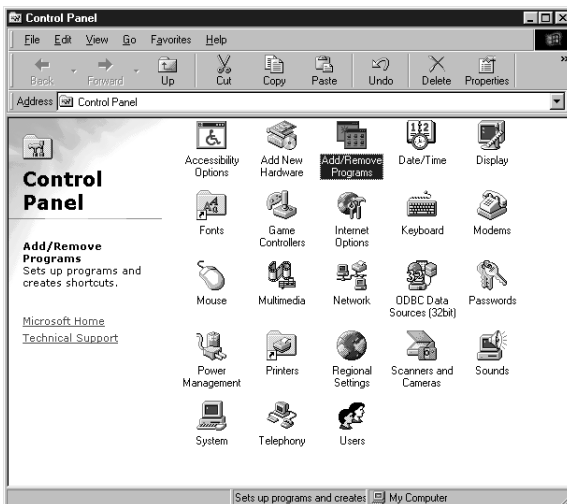
Important

- Be sure to log on as the Administrator if your system is Windows NT 4.0 Workstation, Windows 2000 Professional, or Windows XP.
- The dialog boxes and button names in Windows XP are different from the ones used in this manual. Refer to the Windows XP “Help and Support Center” to uninstall the software.

1 Click [Start], point to [Settings] and click [Control Panel].

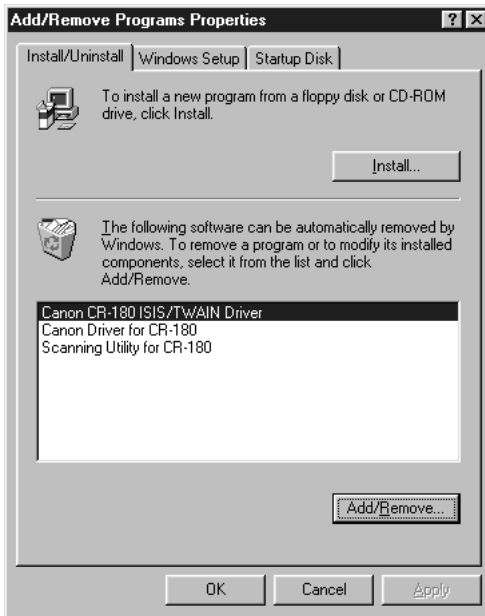


2 Double-click the [Add/Remove Programs] icon.



The [Add/Remove Programs Properties] dialog box appears.

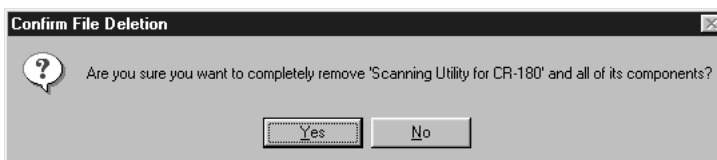
- 3** Select the software that you want to remove from the list in the dialog box, and then click [Add/Remove].



Important

- If you uninstall the “Scanning Utility for CR-180” you also need to uninstall the “Canon Driver for CR-180.”
- If you uninstall the ISIS/TWAIN driver, select the “Canon CR-180 ISIS/TWAIN Driver.”

- 4** The [Confirm File Deletion] dialog box appears.



If you selected “Scanning Utility for CR-180,” the above dialog box appears.

- 5** Click [Yes], and the uninstaller starts.

Follow the instructions on the screen to finish uninstalling the software.

Chapter 4

Document Feeding and Scanning

This chapter describes precautions regarding documents that can be handled on this scanner and scanning operations.

4.1 Documents	38
Types of Documents	38
Placing Documents	39
4.2 Document Feeding and Scanning	41
Scan Procedure	41
Manual Feeding (Bypass Mode)	43

4.1 Documents

This section describes the types of documents that can be used and how to place them.



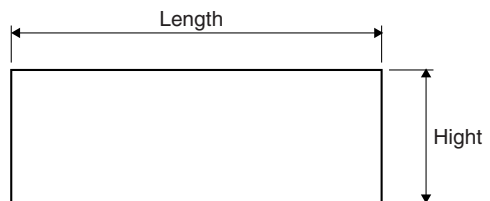
CAUTION

Treat the documents carefully. The paper edges may cut your fingers.

Types of Documents

The CR-180 can feed a wide variety of document sizes. The ranges of width and length for a document are:

- Height : 60 to 118 mm
- Length : 120 to 230 mm
- Thickness : 0.08 to 0.20 mm
- Weight : 60 to 120 g/m²



Follow these guidelines when you prepare a document for scanning:

- Before scanning documents that contain pasted artwork, make sure that the ink or paste is thoroughly dry. If the documents are scanned with wet ink or paste, the inside of the scanner may become dirty and it may cause a malfunction.
- If you scan a document written in pencil, the letters may not be scanned properly or the pencil may rub off onto the rollers and stain subsequent documents. Before you scan this kind of document, make a copy and then scan the copy. After scanning a document written in pencil or some other soft writing material, be sure to clean the scanning rollers. (See “Cleaning the Scanning Glass and Rollers,” on p.55.)
- If you scan thin paper in the Duplex mode, the ink printed on the back side may be scanned. If this happens, adjust the scanning density.
- Scanning documents with a rough surface may not feed easily, and may cause friction between the documents, resulting in a feeding error. If this happens, feed the documents one by one.
- To avoid paper jams, damage to documents, and a scanner malfunction, do not feed the following types of paper into the scanner. If you want to scan these types of paper, first make a copy and then scan the copy.



Wrinkled or creased paper



Carbon backed paper



Curled paper



Coated paper or fax recording paper



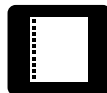
Torn paper



Extremely thin paper



Paper with clips or staples



Paper with binding holes

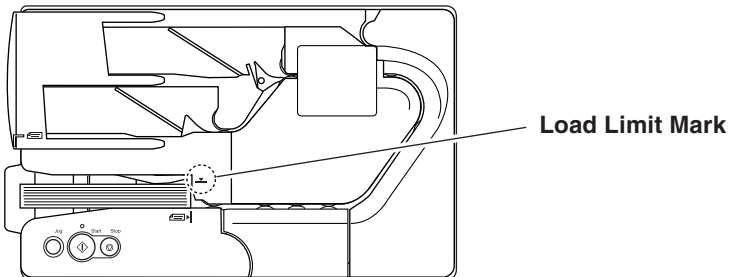

Note

- Note that mixing documents of different thickness and size may cause a malfunction during feeding.
- Curled, wrinkled, or folded documents may cause an error. If this happens, straighten out the curls, or reduce the number of documents loaded.
- Documents containing text or pictures within 5 mm of its edges, or documents with a color background, may cause errors in automatic size detection.

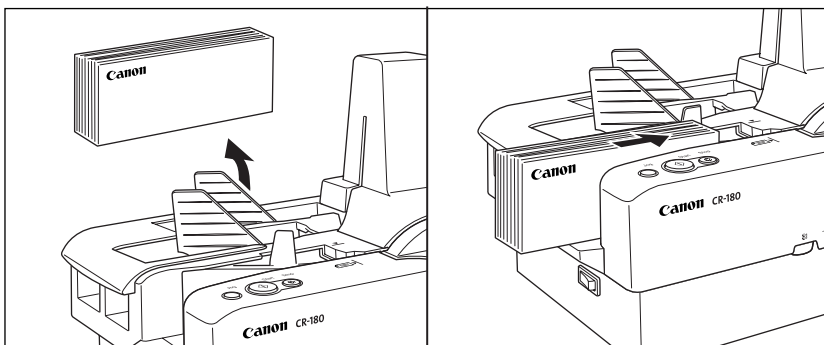
Placing Documents

Note the following points when placing documents on the scanner.

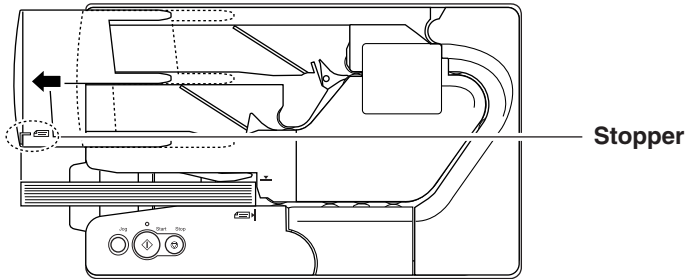
- **Place the front of the document toward you.**
- **Do not exceed the load limit mark when placing documents in the document tray. This may cause feeding errors or paper jams.**



- **A maximum of 200 documents can be loaded at one time.**
- **Each eject pocket can hold the same number of documents as the document tray. Remove the documents in the eject pockets before scanning a different document.**



- If you place long documents, move the stopper to the edge of the document in the document tray. Otherwise, this may cause a paper eject error.



4.2 Document Feeding and Scanning

This section describes how to load and scan documents.

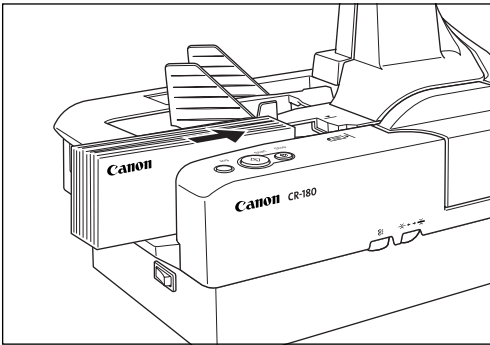


- Avoid wearing loose fitting clothing, dangling jewelry, long ties, or long hair that could become entangled with moving parts, especially the rollers that feed paper through the scanner. If such objects become entangled, immediately disconnect the power plug from the power outlet.
- Check the paper stack and remove all clips, staples, pins, or any other type of metal or plastic fastener. These objects may cause damage to the document, a paper jam, or a scanner malfunction.

ENGLISH

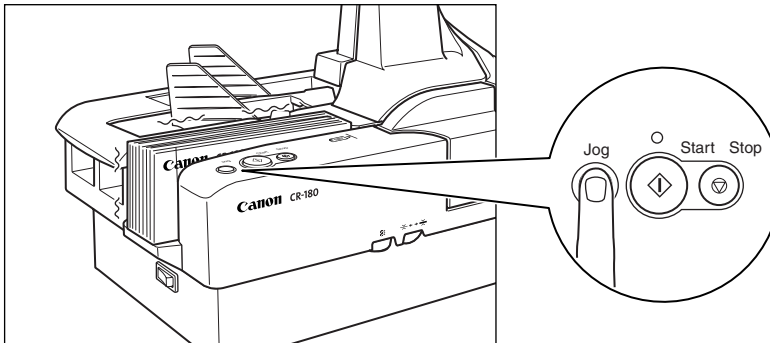
Scan Procedure

- 1** Carefully align the edges of the document.
- 2** Place the first page of the document facing you, and place the leading edge of the document into the scanner.



3 If the documents are not aligned, press [Jog].

The jogger mechanism can be used to align documents.



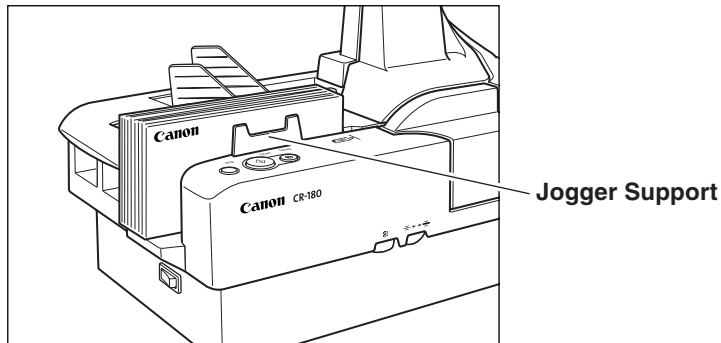
Important

If you press [Jog] when a batch of documents of various sizes are loaded, the alignment will be incomplete, and the documents will not be scanned in the order loaded. If you are scanning documents of various sizes, align the leading edges of all the documents with the entry point of feeding.



Note

- The jogger vibrates for 10 seconds and then stops. Press one of the operation buttons to stop the jogger.
- If the documents are large, the documents may fall over while they are vibrating. If this happens, attach the jogger support to prevent the documents from falling over.



4 Instruct scanning to start from the software application.



Note

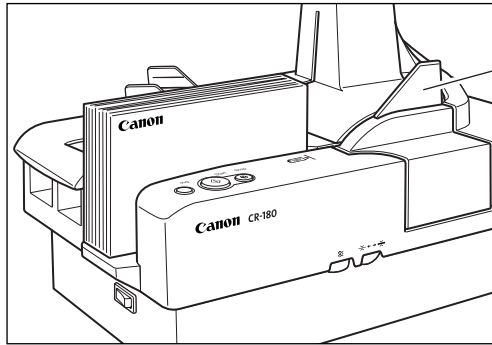
If the feed setting in the software application is “Panel-Feeding”, press [Start] to start scanning.

5 Scanning starts.



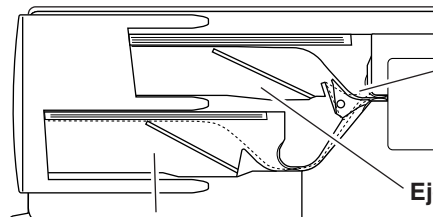
Note

If the documents are large, the documents may fall over while they are being fed. If this happens, attach the document feed guide to prevent the documents from falling over.



Document Feed Guide

If "Sort Method" is set in the software application, the document will be ejected to one of the two eject pockets according to the separation conditions that have been set.



Flapper

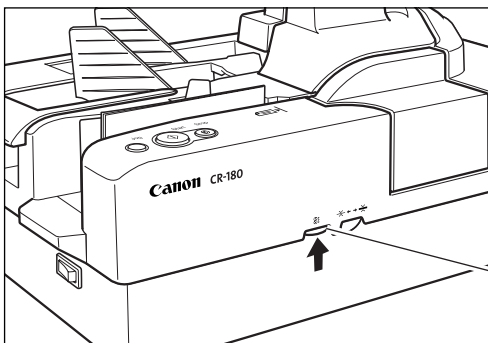
Separates documents

Eject Pocket 1

Eject Pocket 2

Manual Feeding (Bypass Mode)

Use the Bypass (manual) mode to scan duplicate forms which have sticky edges or documents that have a rough surface. Feed these documents one by one and press Bypass Mode button.



Bypass Mode Button



Important

For duplicate forms, load the side with the sticky edges toward the feeding entry point.

Chapter 5

Troubleshooting

This chapter describes the problems that might occur in the CR-180, and how to remedy them.

5.1 When the Scanner Is Not Recognized	46
SCSI Connections	46
USB Connections	47
5.2 Clearing Paper Jams	48
5.3 Feeding Trouble	50
5.4 When the Scanned Image Is Not Normal	52



When the Scanner Is Not Recognized

The following causes and remedies describe why your computer may not recognize the scanner.

SCSI Connections

Cause	The scanner is not connected correctly.
Remedy	Connect the SCSI cable to the scanner correctly. (See “SCSI Connections,” on p.17.)

Cause	The SCSI card is not recognized.
Remedy	Correctly connect the SCSI card referring to the SCSI card manual. Also, check the following according to the operating system your computer is running on. Windows 95, Windows 98, and Windows Me: Click [Start]-[Settings]-[Control Panel]-[System], open the [Device Manager] dialog box and check if “SCSI Controller” has an “x” or “!” by it. If you can see one of these, refer to the SCSI card’s operator’s manual to reset the SCSI card. Windows NT 4.0 Workstation: Click [Start]-[Settings]-[Control Panel], open the [SCSI adapter] dialog box and check if the SCSI card is being recognized correctly. If it is not recognized correctly, refer to the SCSI card’s operator’s manual to reset the SCSI card. Windows 2000 Professional: Click [Start]-[Settings]-[Control Panel]-[System]-[Hardware], open the [Device Manager] dialog box and check if “SCSI controller” has an “x” or “!” by it. If you can see one of these, refer to the SCSI card’s operator’s manual to reset the SCSI card. Windows XP: Click [Start]-[Control Panel]-[Performance and Maintenance]-[System]-[Hardware], open the [Device Manager] dialog box and check if “SCSI controller” has an “x” or “!” by it. If you can see one of these, refer to the SCSI card’s operator’s manual to reset the SCSI card.

Cause	The same SCSI ID is used for other SCSI devices.
Remedy	Check the SCSI ID of all connected SCSI devices, and make sure that the same SCSI ID is not set for two or more devices. Reset the SCSI IDs if the same SCSI ID is set.
Cause	Another SCSI device is valid as a terminator.
Remedy	Cancel the SCSI device terminator that is connected between the CR-180 and the computer. The CR-180 must be at the end of the daisy chain, and all other SCSI devices in between the computer and CR-180 must their terminators OFF.
Cause	The scanner was turned ON after turning ON the computer.
Remedy	Turn the computer and scanner OFF, turn ON the scanner, and then turn ON the computer.
Cause	The scanner is OFF.
Remedy	Turn OFF the computer, turn ON the scanner, and then turn ON the computer.
Cause	This SCSI card is not compatible with the scanner.
Remedy	Replace with a SCSI card that is compatible with the driver application.

USB Connections

Cause	The scanner is not connected correctly.
Remedy	Connect the scanner correctly with a cable that supports USB.
Cause	The USB interface card is not correctly installed in the computer.
Remedy	Refer to the USB interface card operation manual and install it correctly. Check if the USB interface card is being recognized by Windows. (See “USB Connections,” on p.19.)
Cause	The scanner is OFF.
Remedy	Check the connections on the computer, and then turn ON the scanner.
Cause	The USB interface card does not support the scanner.
Remedy	Use one of the recommended USB interface cards. (See “USB 2.0 Interface Cards,” on p.19.)

5.2 Clearing Paper Jams

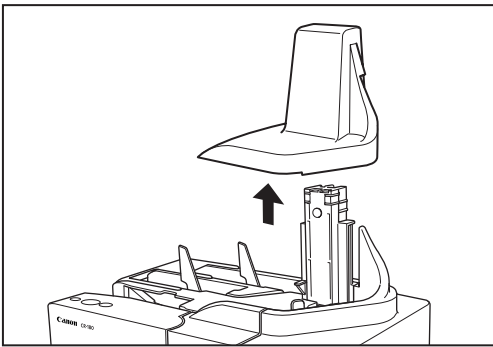
If paper has jammed, open the maintenance cover and remove the jammed paper.



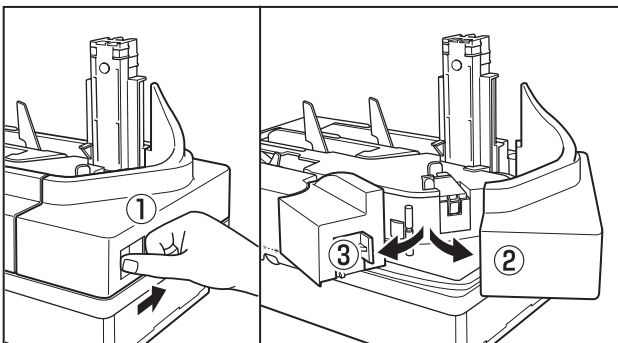
CAUTION

- Be careful when you clear a paper jam. You may be injured unexpectedly. For example, the paper edges may cut your fingers, or the document may be damaged.
- Remove all jammed sheets of paper. Paper scraps left inside the scanner may cause a paper jam or malfunction.

1 Remove the top cover.

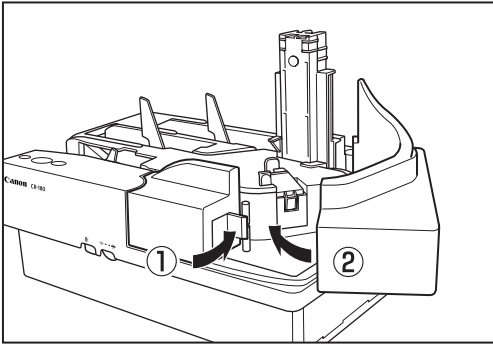


2 Press the open button, and pull the maintenance cover open to the right and left.

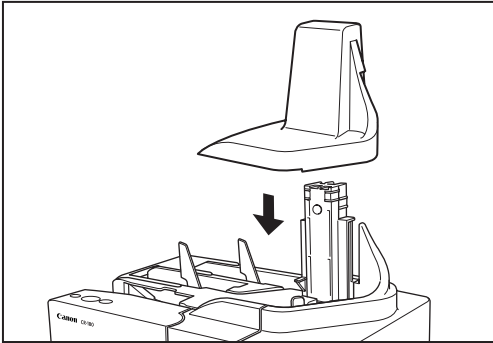


3 Remove the paper that has jammed.

- 4** Close the maintenance cover in the order shown in the diagram below.



- 5** Carefully replace the top cover.





Feeding Trouble

If the document is not fed properly or the detection functions do not work properly, remedy the problem by checking the following conditions.

Condition

A paper jam has occurred.

Cause and Remedy

- Check to make sure that the size and thickness of the document are within the supported range of the scanner, and if the quality of the paper is appropriate.
For cautions on handling documents, see “Documents,” on p.38.
- Documents with rough surfaces may cause a paper feed error to occur.
Scan one sheet at a time in the Bypass (manual) mode. (See “Manual Feeding (Bypass Mode),” on p.43.)
- Dirty or worn rollers inside the scanner may cause a paper jam.
Clean the rollers if they are dirty. (See “Cleaning the Scanning Glass and Rollers,” on p.55.) Worn rollers must be replaced. Contact your dealer or Canon service representative.
- The separation roller gap is too wide. Adjust the separation roller gap. (See “Adjusting the Separation Roller Gap,” on p.66.)

Condition

A double feed error occurred even though documents are not being double fed.

Cause and Remedy

A double feed error may occur when documents with different thicknesses are mixed. Turn off the double feed detection mode, if this happens.

Condition	MICR characters are not recognized correctly.
Cause and Remedy	<ul style="list-style-type: none"> • The scanner cannot correctly read MICR characters if the magnetic heads are dirty. Clean the MICR magnetic heads. (See “Cleaning the Magnetic Heads,” on p.58.) • If MICR characters cannot be recognized correctly after cleaning the heads, the MICR heads may be worn. Contact your dealer or Canon service representative. • The MICR text is on the back of the document. Load the side with the MICR characters face up in the document tray.
Other Causes	<ul style="list-style-type: none"> • Some of the MICR characters are scratched or missing. Splattered MICR ink or toner may also be the problem.
Condition	The imprinter is not printing correctly (missing imprint dots).
Cause and Remedy	Ink is clogged in the ink jet nozzle. Clean the ink jet nozzle. Cleaning the ink jet nozzle is recommended before using the CR-180. (See “Cleaning the Ink Heads and Ink Absorber,” on p.60.)
Condition	Documents get dirty when using the imprinter.
Cause and Remedy	Ink from the imprinter has been placed on the feed path. Clean the ink off the feed path. (See “Cleaning the Ink Heads and Ink Absorber,” on p.57.)

5.4

When the Scanned Image Is Not Normal

If there is a problem with the scanned image (the image is not sharp or stripes appear), one of the following conditions may be a probable cause. Check the following conditions, and take the appropriate action.

- **The scanning glass or rollers are dirty.**

If the scanning glass or rollers are dirty, the dirt will appear on the scanned image.

→ Clean the scanning glass and rollers. For details, see “Daily Cleaning,” on p.54.

- **The scan conditions are inappropriate.**

If the scan conditions are inappropriate, the scanned image will not be sharp or will appear as dark.

→ Check the brightness and other scanner settings.

If the scanned image is blurry or the document has not been scanned at all, the brightness may be set too high.

If the scanned image appears dark, the brightness may be set too low.

Also, check the settings on the driver and the software application.

- **The driver or application does not run correctly.**

If the document cannot be scanned correctly even if the scan conditions are adjusted, the driver or the application may not be functioning correctly.

→ Reinstall the driver or application.

For details on how to install the driver, see Chapter 3, “Software.”

For details on how to install the application, see the applications instruction manual.

- **Other Causes**

Even if the computer may be recognizing the scanner correctly, and the driver and the application is installed correctly, scanning may not be performed correctly. If this happens, the interface card is not compatible. Use the recommended interface card.

If the above remedies do not rectify the problem, contact your dealer or a Canon service representative.

Chapter 6

Maintenance

This chapter describes how to clean and maintain the scanner.

6.1 Daily Cleaning	54
Cleaning the Main Unit	54
Cleaning the Scanning Glass and Rollers	55
Cleaning the Magnetic Heads	58
Cleaning the Ink Heads and Ink Absorber	60
6.2 Maintenance	63
Replacing the Ink Cartridge	63
Adjusting the Separation Roller Gap	66

6.1

Daily Cleaning

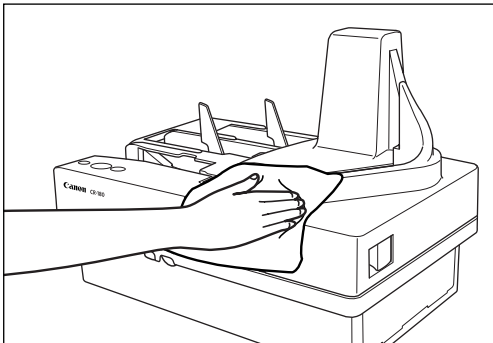
To ensure high-quality image scanning, regularly clean your CR-180 as described below.



- Before you clean the scanner, turn OFF the scanner and computer, and disconnect the power cord from the power outlet. Otherwise, it may cause an electrical shock.
- Never clean the scanner with any kind of organic solvent, such as alcohol, benzene, or paint thinner. This may cause a fire and electrical shock, or cause the exterior of the scanner to disfigure or discolor.
- Never spray mild detergent or water directly on the scanning glass. The spray could penetrate below the glass and contaminate the internal light source and lenses.

Cleaning the Main Unit

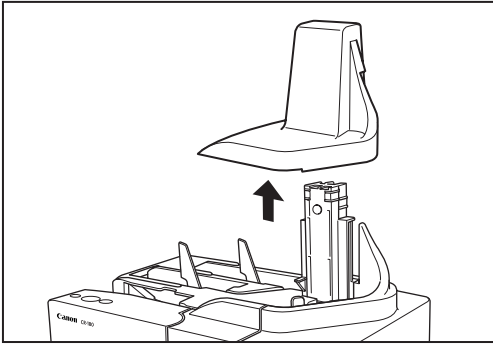
Wipe the scanner with a firmly wrung cloth, moistened slightly with water or mild detergent. Then, wipe off with a clean, dry cloth.



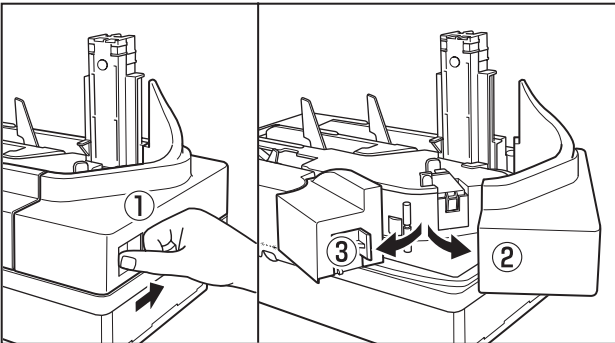
Cleaning the Scanning Glass and Rollers

If stripes appear on scanned images or if dirt appears on scanned documents, clean the scanning glass or rollers. Clean the scanning glass and rollers regularly.

1 Remove the top cover.



2 Press the open button, and pull the maintenance cover open to the right and left.

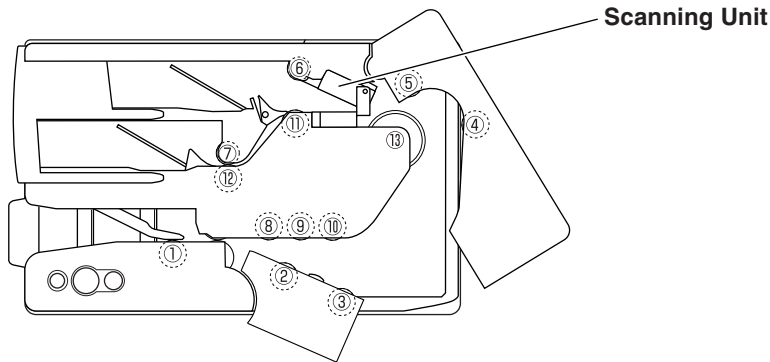


Important

If you notice paper dust in the feed path when you open the maintenance cover, clean it out with a cotton swab.

3 Spin the rollers while wiping them clean with a firmly wrung cloth dampened with water or a mild detergent.

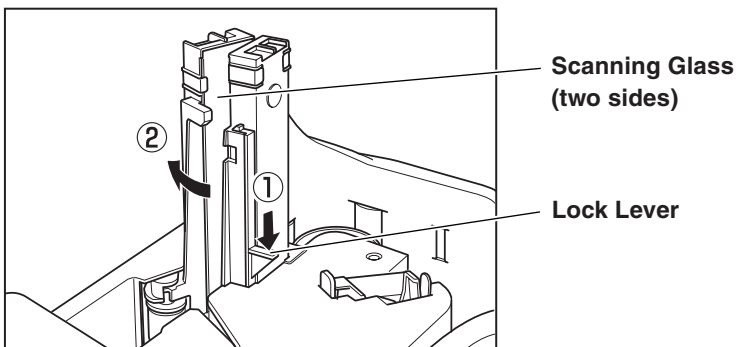
There are 13 roller positions, as shown in the diagram below.



Note

- Use cotton swabs to clean the rollers in locations that are too narrow for your fingers.
- Rollers in positions ⑧ to ⑫ are turned by the roller in position ⑬. Turn the roller in position ⑬ to wipe the rollers.
- Open the scanning unit to clean the rollers in positions ⑥ to ⑪.

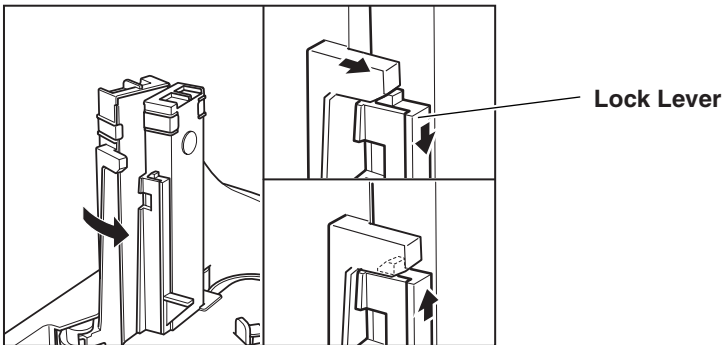
4 Push down the lock lever to release the lock on the scanning unit (①), and then open the scanning unit (②).



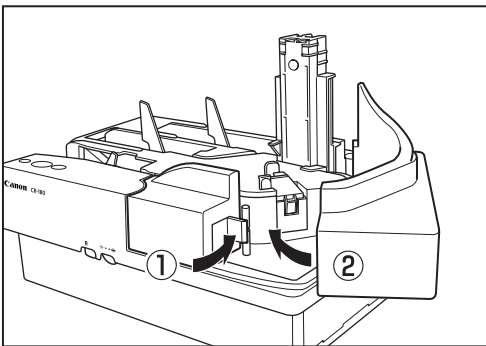
5 Use cotton swabs that are commercially available to clean the entire scanning glass.

6 Carefully close the scanning unit.

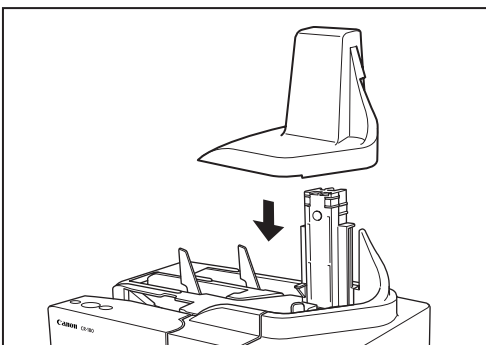
When closing the scanning unit, you will hear a click when it is completely closed.



7 Close the maintenance covers in the order shown in the diagram below.



8 Carefully replace the top cover.

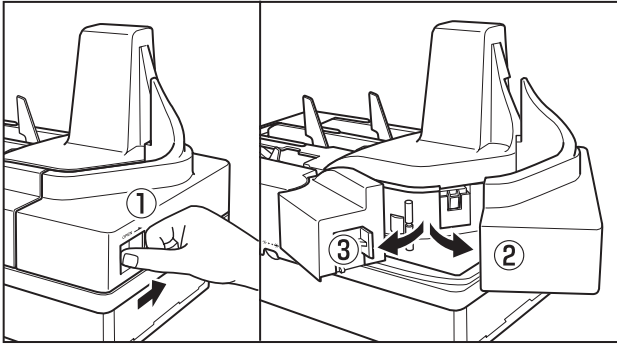


If paper jams and double feeds (two papers being fed at the same time) still occur after cleaning the rollers, the rollers may be worn. The rollers need to be changed. Contact your local dealer or a Canon service representative.

Cleaning the Magnetic Heads

If the magnetic heads are dirty, then MICR characters cannot be scanned correctly. Periodically, clean the magnetic heads with a commercially available audio head cleaner.

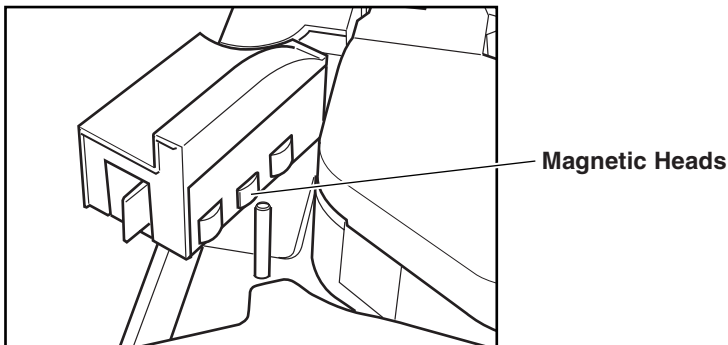
- 1 Press the open button, and pull the maintenance cover open to the right and left.**



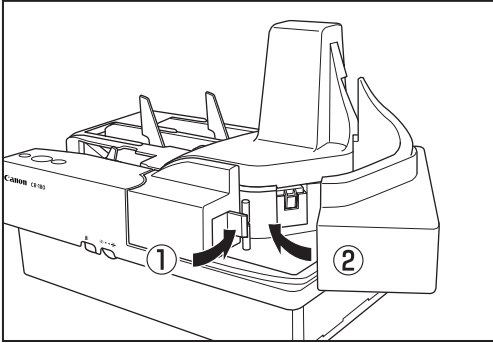
If you notice paper dust in the feed path when you open the maintenance cover, clean it out with a cotton swab.

- 2 Use a commercially available audio head cleaner to clean the magnetic heads.**

The magnetic heads are located in the positions shown in the diagram below.



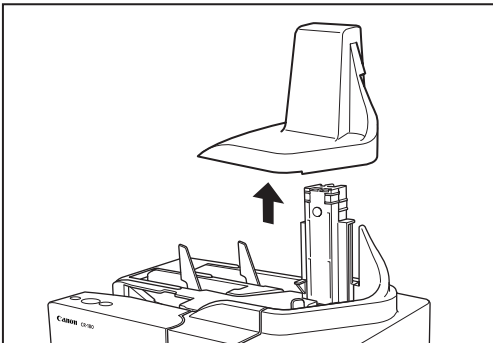
3 Close the maintenance covers in the order shown in the diagram below.



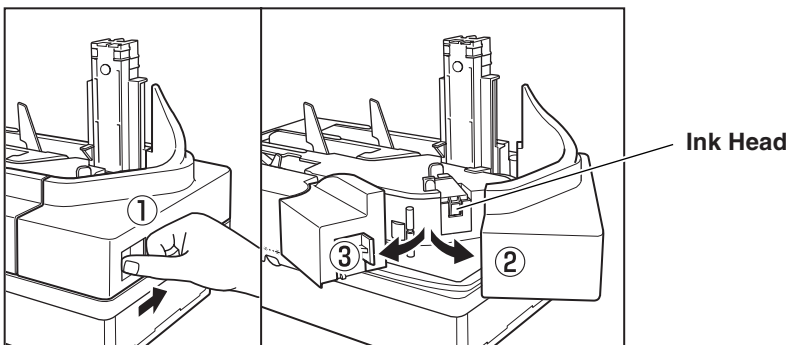
Cleaning the Ink Heads and Ink Absorber

Ink that collects around the ink jet nozzle may stain your documents or cause the text to appear as scratched. Clean the area around the ink heads and the ink absorber periodically.

1 Remove the top cover.

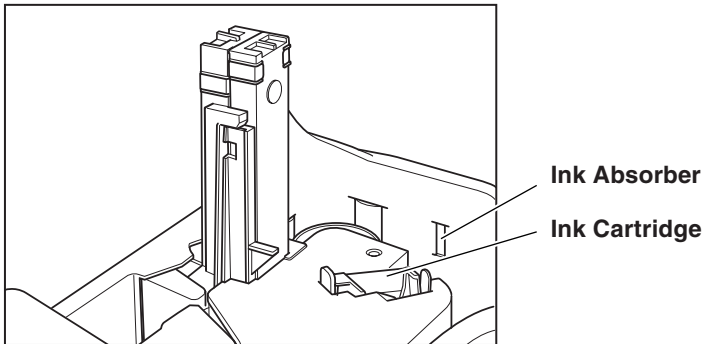


2 Press the open button, and pull the maintenance cover open to the right and left.



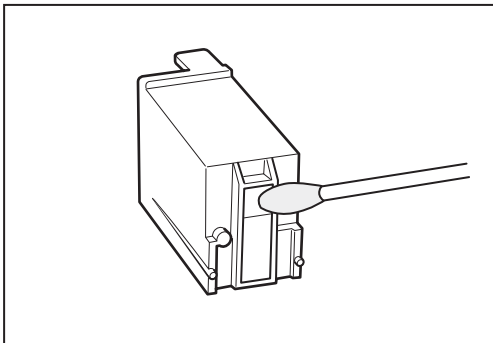
If you notice paper dust in the feed path when you open the maintenance cover, clean it out with a cotton swab.

- 3** Clean the ink heads and absorber with a firmly wrung cloth dampened with water or a mild detergent, then dry them with a clean, dry cloth.



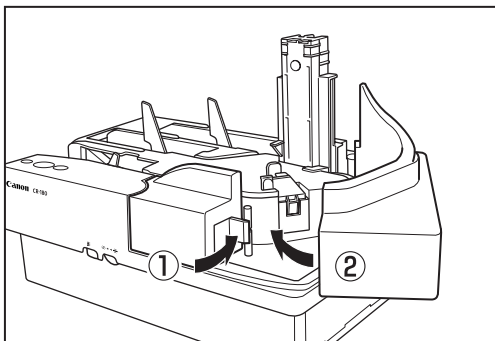
- 4** Remove the ink cartridge.
For more information, see “Replacing the Ink Cartridge,” on p.63.

- 5** Use a cotton swab to remove the ink from around the ink jet nozzle.

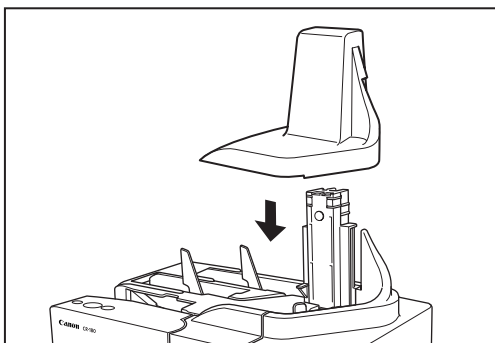


- 6** Insert the ink cartridge.
For more information, see “Replacing the Ink Cartridge,” on p.63.

7 Close the maintenance covers in the order shown in the diagram below.



8 Carefully replace the top cover.



Note

If the top cover is not firmly in place, the ink cartridge is not installed properly. Check the ink cartridge.

6.2 Maintenance

Make the following adjustments to maintain scanning quality.

Replacing the Ink Cartridge

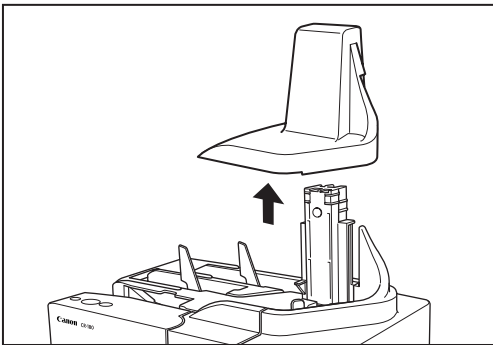
The ink cartridge needs to be replaced if the printed text becomes scratchy or faint even if you have cleaned the ink jet nozzle. Replace the ink cartridge according to the following procedure below.



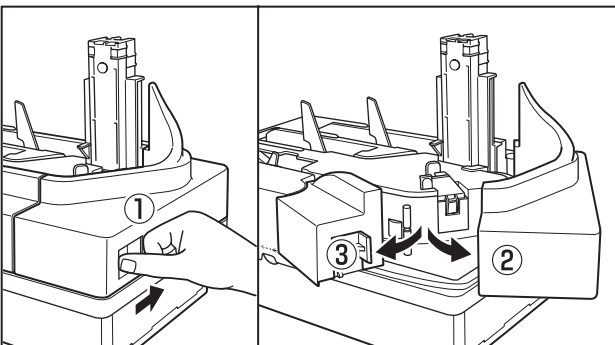
Note

Use a Hewlett Packard ink cartridge. (See “About the Ink Cartridge,” on p.25.)

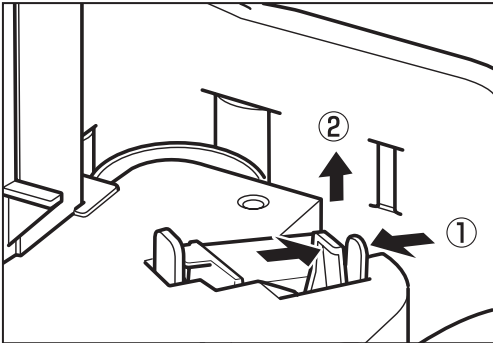
1 Remove the top cover.



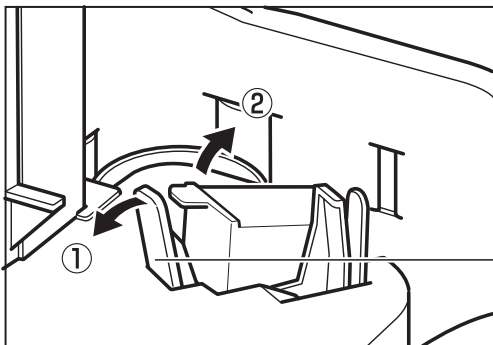
2 Press the open button, and pull the maintenance cover open to the right and left.



3 Squeeze the print position adjustment lever, and lift up the cartridge.

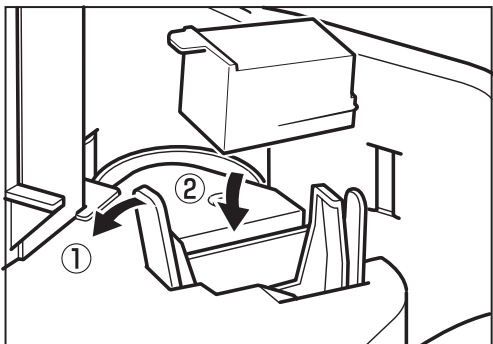


4 Bend the lock lever to the left, lever and remove the ink cartridge.



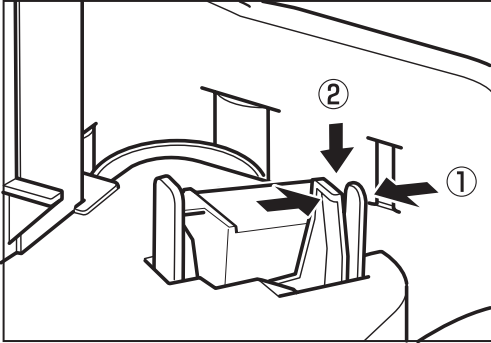
Lock Lever

5 Bend the lock lever down, and insert the new ink cartridge.

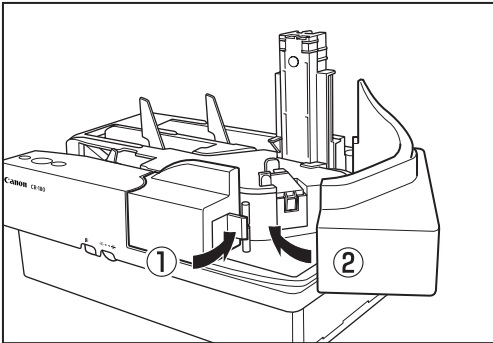


Reposition the lock lever, and make sure that the ink cartridge is securely in place.

- 6** Squeeze the print position adjustment lever, and lower the ink cartridge into place.



- 7** Close the maintenance covers in the order shown in the diagram below.



- 8** Carefully replace the top cover.



Note

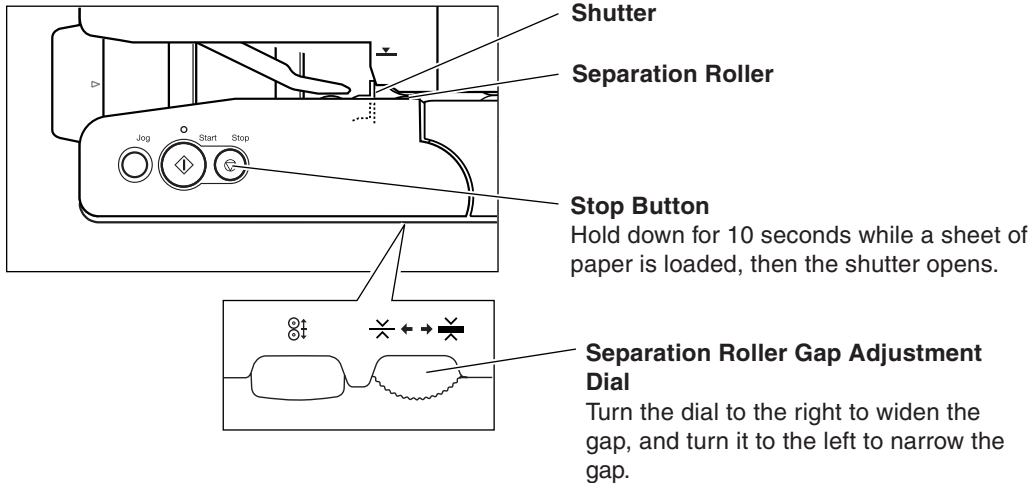
If the top cover is not firmly in place, the ink cartridge is not installed properly. Check the ink cartridge.

Adjusting the Separation Roller Gap

If documents do not feed correctly, the separation roller may not be adjusted correctly. Adjust the separation roller gap according to the following procedure.

- 1 Place two sheets of paper in the document tray, and hold the Stop button down for 10 seconds.**

The shutter opens.



Note

- If there is no paper in the document tray, the shutter will not open.
- The shutter will not open if the maintenance covers are open.

- 2 Feed one sheet of paper into the separation roller gap, then turn the adjustment dial to move the paper smoothly into the separation roller gap.**

- 3 While one sheet of paper is fed into the separation roller gap, adjust the adjustment dial so that the second sheet of paper does not feed into the separation roller gap.**

- 4 Remove the paper from the document tray, and close the shutter.**



CAUTION

Do not use the adjustment dial any other time except when adjusting the separation roller gap. Turning the adjustment dial too much may damage the scanner.

Specifications

Scanner Specifications

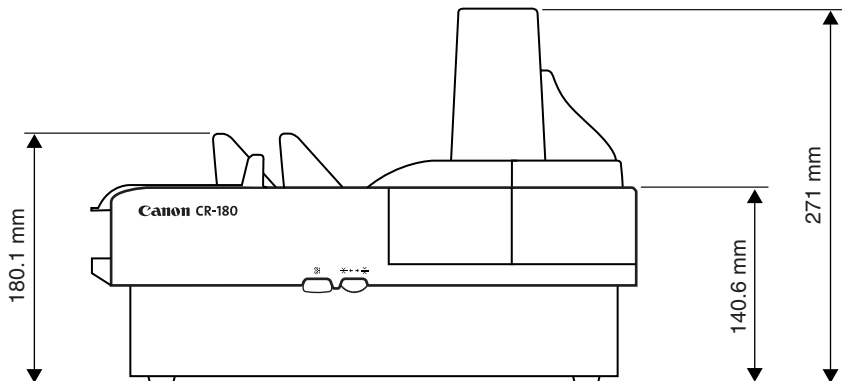
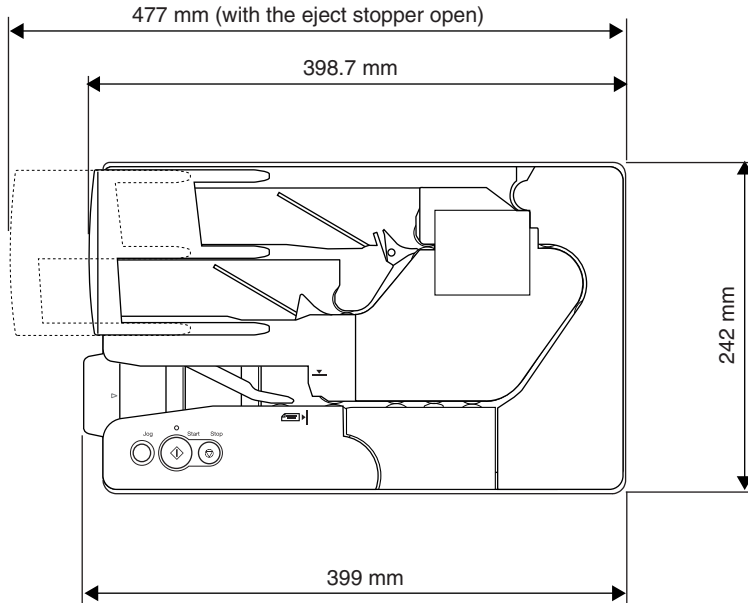
Type	Desktop sheet feed	
Document size	Height: 60 to 118 mm Length: 120 to 230 mm Thickness: 0.08 to 0.20 mm Weight: 60 to 120 g/m ²	
Document feeding	Automatic / Not separate	
Scanning method	Contact image sensor (CMOS)	
Light source	Three color (RGB) LED and 1 white line LED array	
Scanning side	Simplex/duplex	
Scanning mode	Black-and-white, advanced text enhancement, error diffusion, 256 level grayscale	
Scanning resolution (primary scan lines x secondary scan lines)	240 x 240 dpi, 200 x 200 dpi, 150 x 150 dpi, and 100 x 100 dpi	
Scanning speed	180 ppm (American checks)	
Automatic feeder capacity	Load limit of less than 20 mm (within the load limit mark)	
Automatic document feed capacity	Up to 200 sheets (60 to 120 g/m ²)	
Interface	SCSI III/Hi-Speed USB 2.0	
Other functions	Automatic paper size detection, Paper thickness and double feed detection, Dropout color, Emboss enhancement	
Dimensions	271 mm (H) x 399 mm (W) x 242 mm (D)	
Weight	Approximately 13.9 lb (6.3 kg)	
Power requirement	AC 120V (60 Hz) or AC 220-240V (50/60 Hz)	
Power consumption	120 V model	220-240 V model
	Scanning:	0.6A maximum 0.5A maximum
	Standby:	Under 0.2A Under 0.14A
	Low-power mode:	Under 6.6W Under 9.6W
Noise	Less than 70 dB	
Operating environment	Temperature: 50°F to 90.5°F (10°C to 32.5°C) Humidity: 20% to 80% RH	

- Use the recommended operating environment for the ink cartridge when using the imprinter.
- You can use the functions noted above if your software supports them.
- These functions may not work depending on your computer's capabilities and the software you are using.

Specifications are subject to change without notice.

Exterior Dimensions

Units: millimeters



Index

- A -

Adjusting the print position	25
Adjustment line	26
Air vent	14
Amount loaded	39

- B -

Bypass mode	43
Bypass mode button	13, 43

- C -

Carrying	8
Cleaning	
- Main unit	54
Connectors	14

- D -

Daily cleaning	54
Daily maintenance	5
DIP switch	14
Document brace	13
Document feed guide	13, 43
Documents	
- Type of documents	38
- How to place documents	39

- E -

Eject pocket	13, 39, 43
Eject stopper	13, 40
Exterior dimensions	68

- F -

Features of CR-180	10
Feeding trouble	50
Flapper	43

- I -

Ink absorber	60
Ink cartridge	13, 25, 63
Ink jet nozzle	63
Installation location	7
ISIS/TWAIN driver	28, 33

- J -

Jog button	42
Jogger support	13, 42

- L -

Load limit mark	39
-----------------------	----

- M -

Magnetic head	58
Magnetic head for MICR	13
Maintenance	63
Maintenance cover	13

- N -

Number of pages loaded	39
------------------------------	----

- O -

Operating environment	16
Operation buttons	13

- P -

Power cord	12, 20
Power cord connector	14
Power supply	8
Power switch	13
Print position adjustment lever	26

- R -

Recognizing the scanner	22
Rollers	55

- S -

Scanner unit	13, 56
Scanning glass	56
Scanning Utility	28, 32
SCSI connections	17, 46
- SCSI ID	18
- SCSI cable	17
- Operating systems	16
- Recommended SCSI cards	17
- DIP switches	18
SCSI connector	14
Separates documents	43

Separation roller gap adjustment
dial 13, 66
Setup disc 12
Shutter 66
Software 28
- Uninstall 34
- Install 29
- How to use the software 32
Specifications
- Specifications for the scanner 67

- T -

Top cover 13
Troubleshooting 46
Turning OFF the power 24
Turning ON the power 21

- U -

Unpacking the scanner 12
USB connections 19, 47
- USB 2.0 driver 16
- USB interface cable 20
- Interface cards 19
- Operating systems 16
USB connector 14